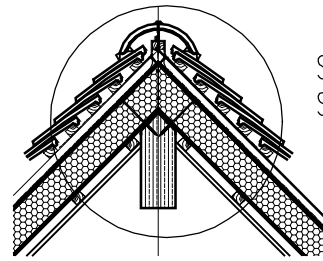


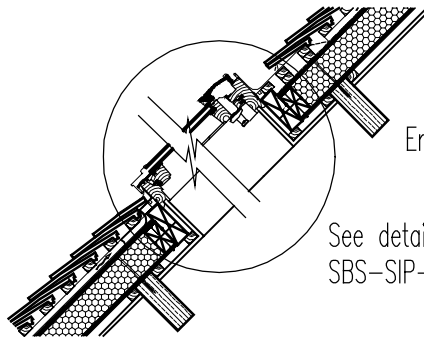
Tile slate roof
 25x38mm sw battens
 25x38mm counter battens
 Approved breather membrane
 SBS 125, 150 or 230mm roof panel



See detail
 SBS-SIP-07

Engineered timber ridge beam

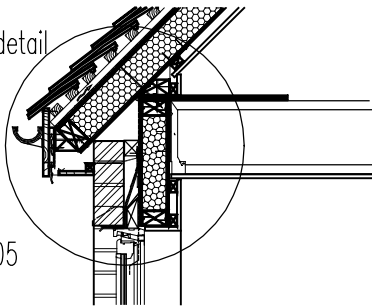
Rooflight



Engineered timber purlin

See detail
 SBS-SIP-06

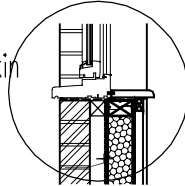
Ventilated eaves detail



See detail
 SBS-SIP-05

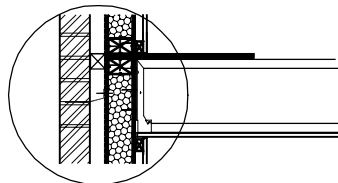
Intermediate floor specification:
 18mm OSB 3 floor
 engineered joists
 15mm plasterboard

102mm brickwork skin



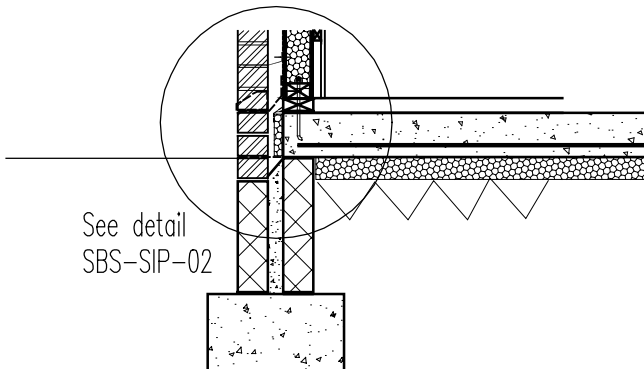
See detail
 SBS-SIP-04

See detail
 SBS-SIP-03



Intermediate floor specification:
 18mm OSB 3 floor
 engineered joists
 15mm plasterboard

See detail
 SBS-SIP-02



SIP Building Systems Limited
 Unit 2, Expressway Industrial Estate, Turnhall Road, Ditton,
 Widnes, Cheshire, WA8 8RD.
 Tel: 0870 224 8040 Fax: 0870 224 8041
 Email: sales@sipbuildingsystems.co.uk

Drawing Title:

SBS-SIP General
 arrangement section

Revisions:

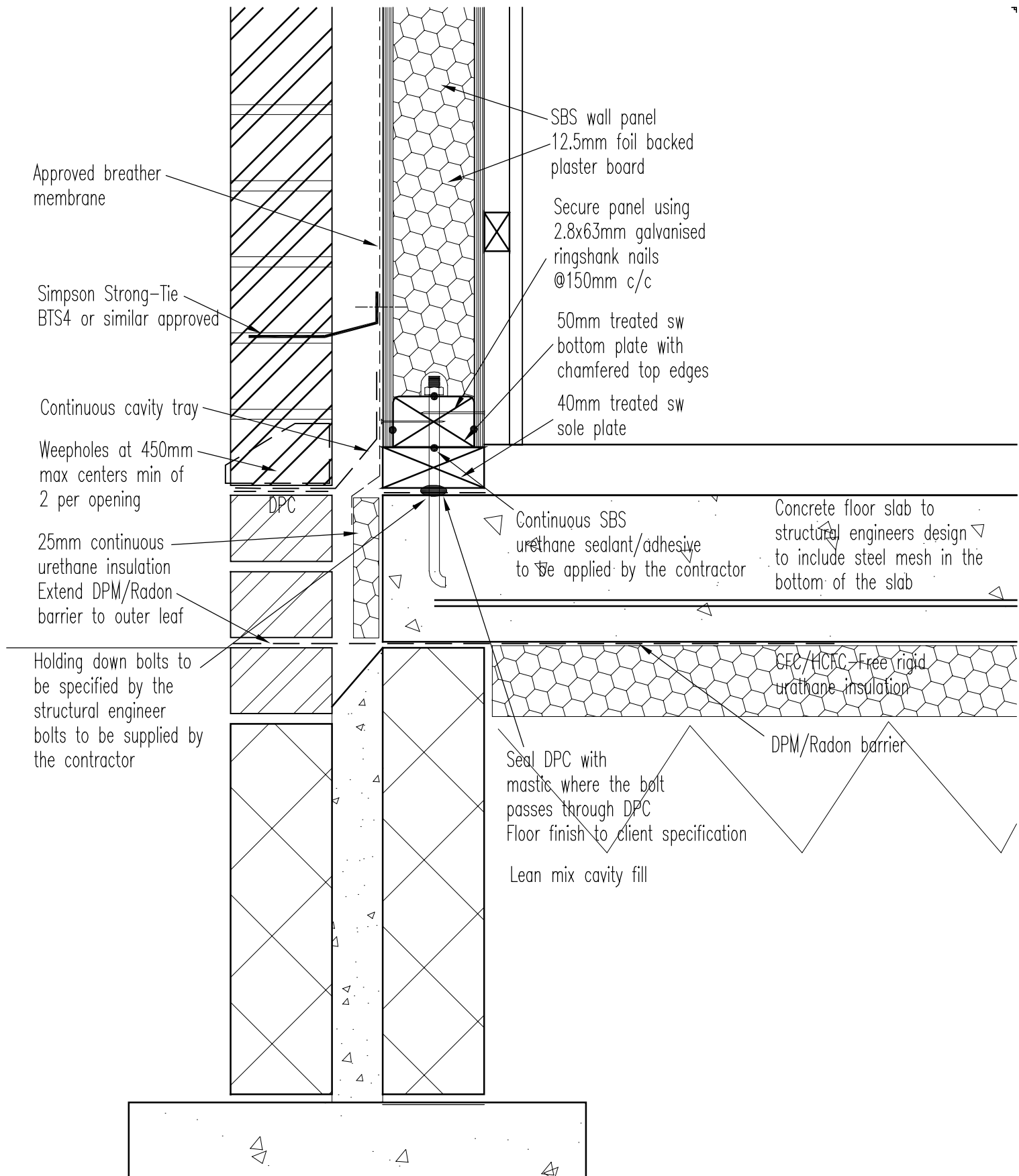
Date:

August 2004

Drawn by:
 RD

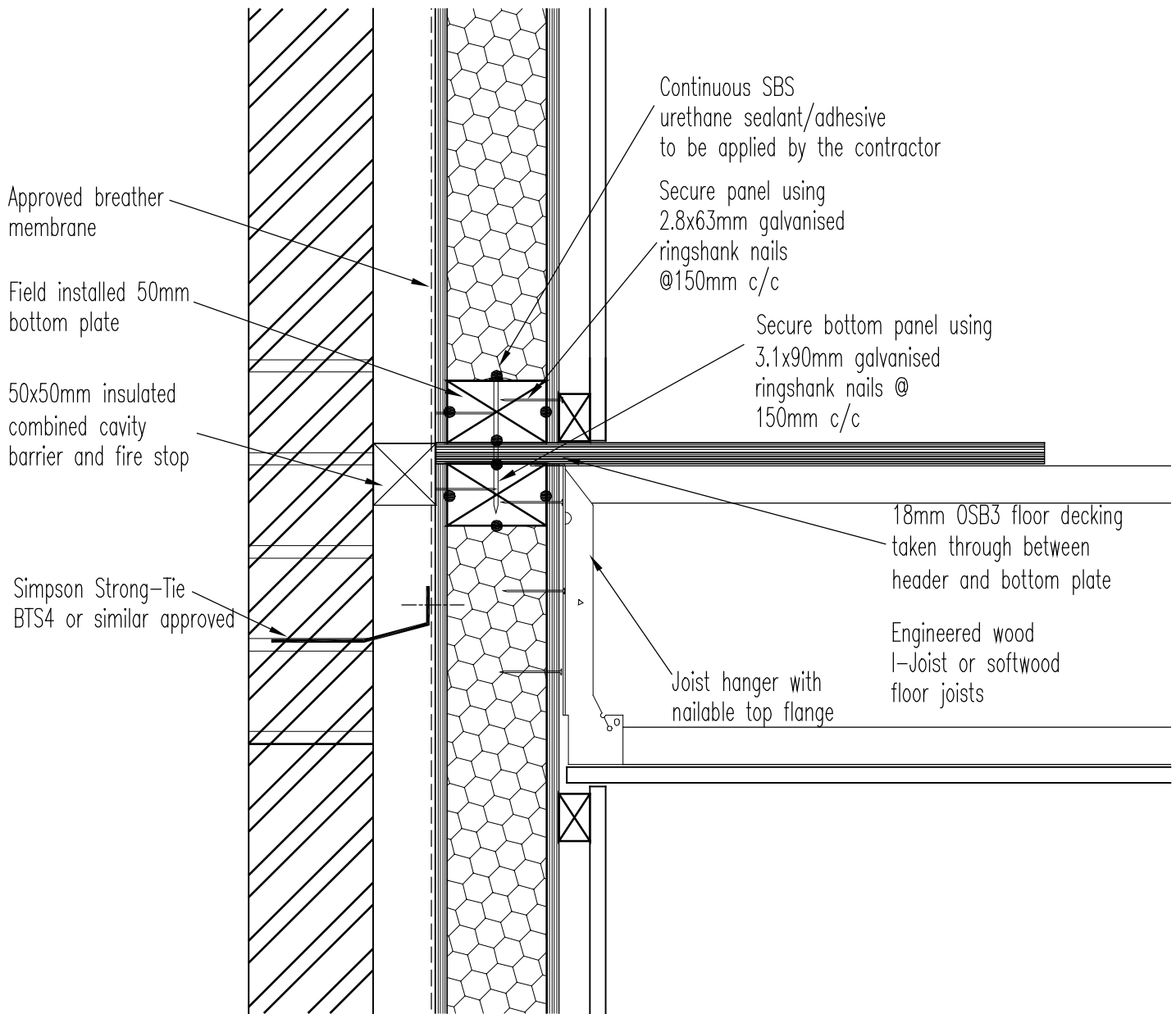
Scale:
 1:25





SIP Building Systems Limited
 Unit 2, Expressway Industrial Estate, Turnhall Road, Ditton,
 Widnes, Cheshire, WA8 8RD.
 Tel: 0870 224 8040 Fax: 0870 224 8041
 Email: sales@sipbuildingsystems.co.uk

Drawing Title: SBS-SIP Sole plate detail	
Revisions:	
Date: August 2004	
Drawn by: RD	



SIP Building Systems Limited
 Unit 2, Expressway Industrial Estate, Turnhall Road, Ditton,
 Widnes, Cheshire, WA8 8RD.
 Tel: 0870 224 8040 Fax: 0870 224 8041
 Email: sales@sipbuildingsystems.co.uk

Drawing Title:
 SBS-SIP
 First floor detail

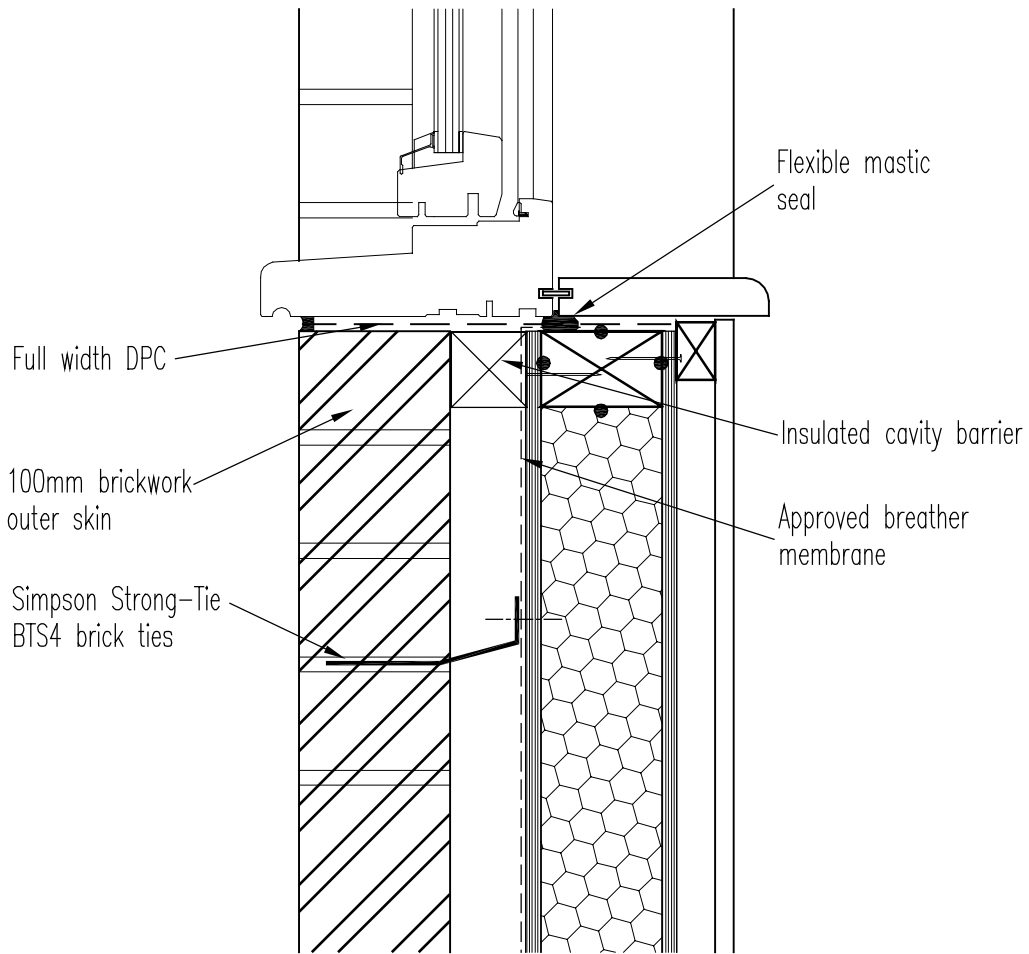
Revisions:

Date:
 August 2004

Drawn by:
 RD

Scale:
 1:5





SIP Building Systems Limited
 Unit 2, Expressway Industrial Estate, Turnhall Road, Ditton,
 Widnes, Cheshire, WA8 8RD.
 Tel: 0870 224 8040 Fax: 0870 224 8041
 Email: sales@sipbuildingsystems.co.uk

Drawing Title:
 SBS-SIP
 Cill detail

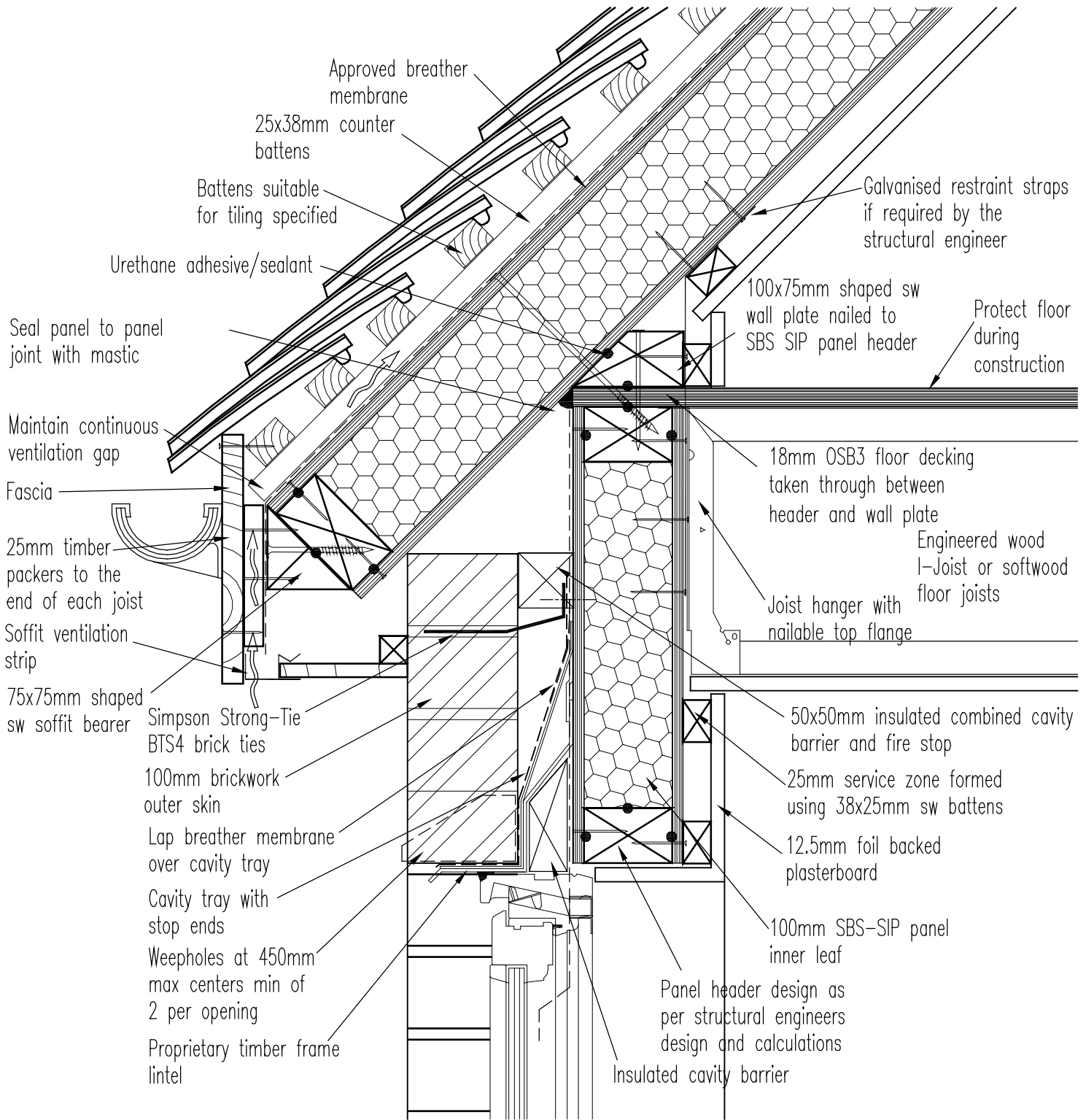
Revisions:

Date:
 August 2004

Drawn by:
 RD

Scale:
 1:5





SIP Building Systems Limited
 Unit 2, Expressway Industrial Estate, Turnhall Road, Ditton,
 Widnes, Cheshire, WA8 8RD.
 Tel: 0870 224 8040 Fax: 0870 224 8041
 Email: sales@sipbuildingsystems.co.uk

Drawing Title:
SBS-SIP
Eaves detail

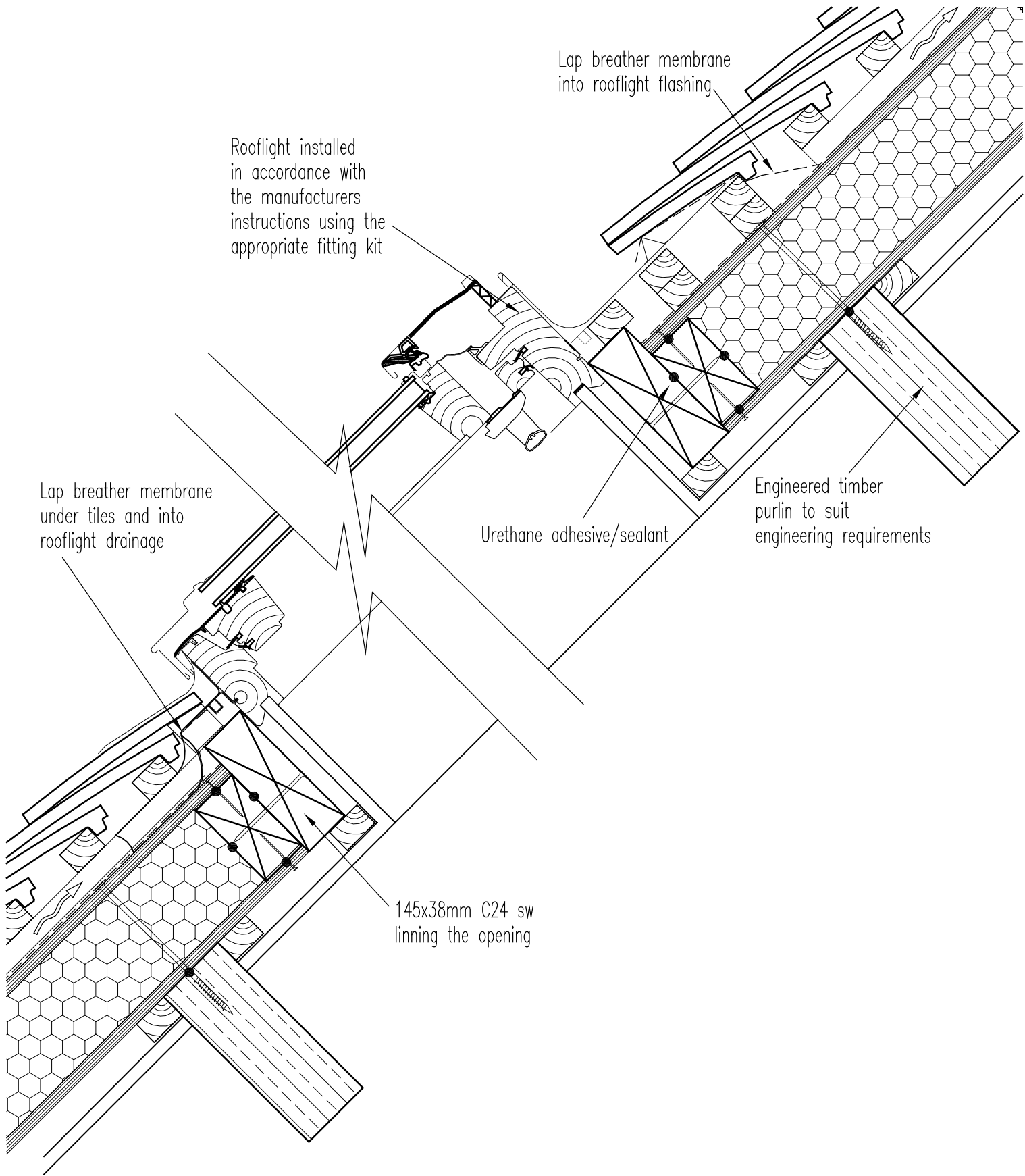
Revisions:

Date:
 August 2004

Drawn by:
 RD

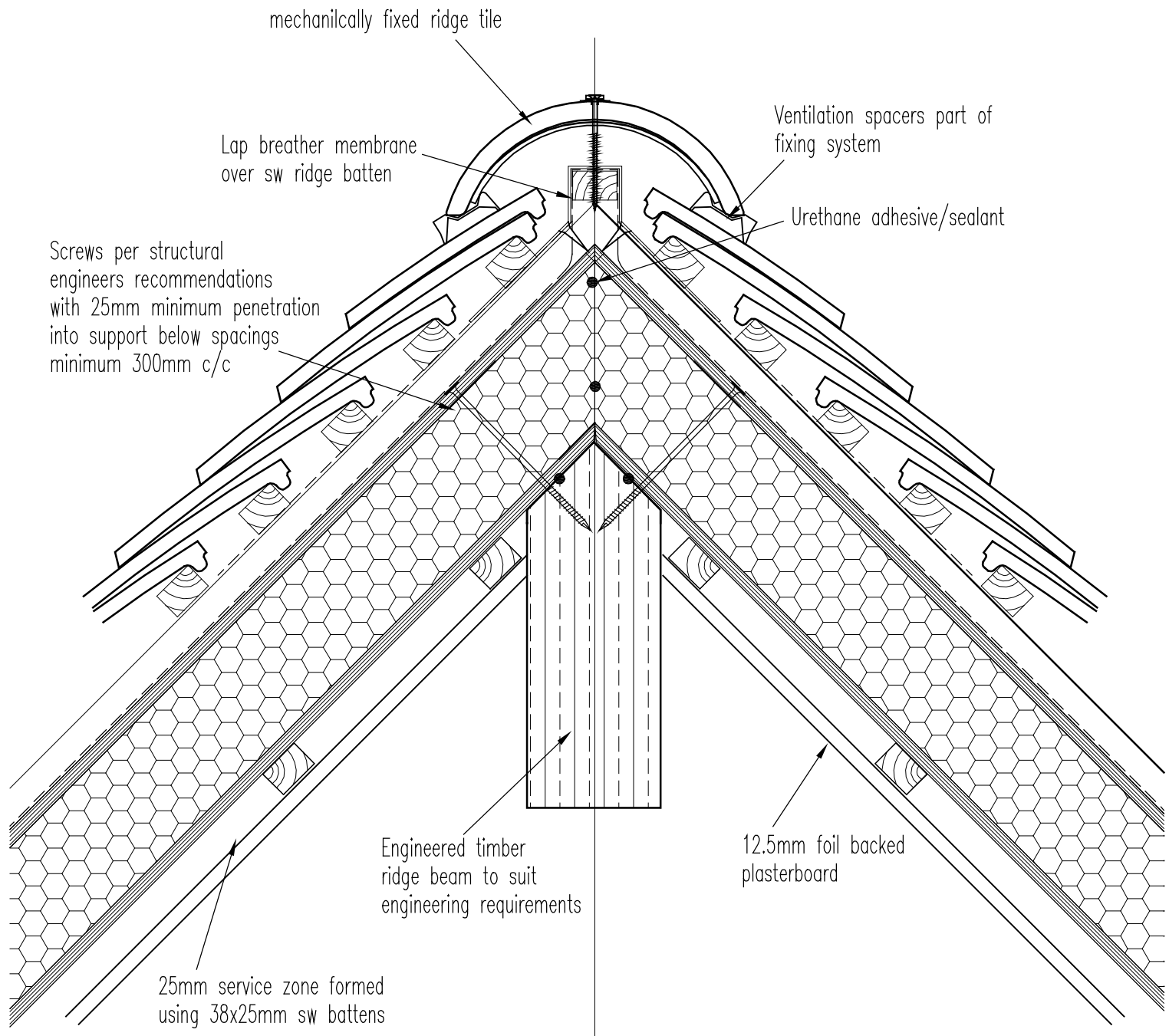
Scale:
 1:5





SIP Building Systems Limited
 Unit 2, Expressway Industrial Estate, Turnhall Road, Ditton,
 Widnes, Cheshire, WA8 8RD.
 Tel: 0870 224 8040 Fax: 0870 224 8041
 Email: sales@sipbuildingsystems.co.uk

Drawing Title: SBS-SIP Roof light detail	
Revisions:	
Date: August 2004	
Drawn by: RD	



SIP Building Systems Limited
 Unit 2, Expressway Industrial Estate, Turnhall Road, Ditton,
 Widnes, Cheshire, WA8 8RD.
 Tel: 0870 224 8040 Fax: 0870 224 8041
 Email: sales@sipbuildingsystems.co.uk

Drawing Title:
SBS-SIP
 Ridge detail

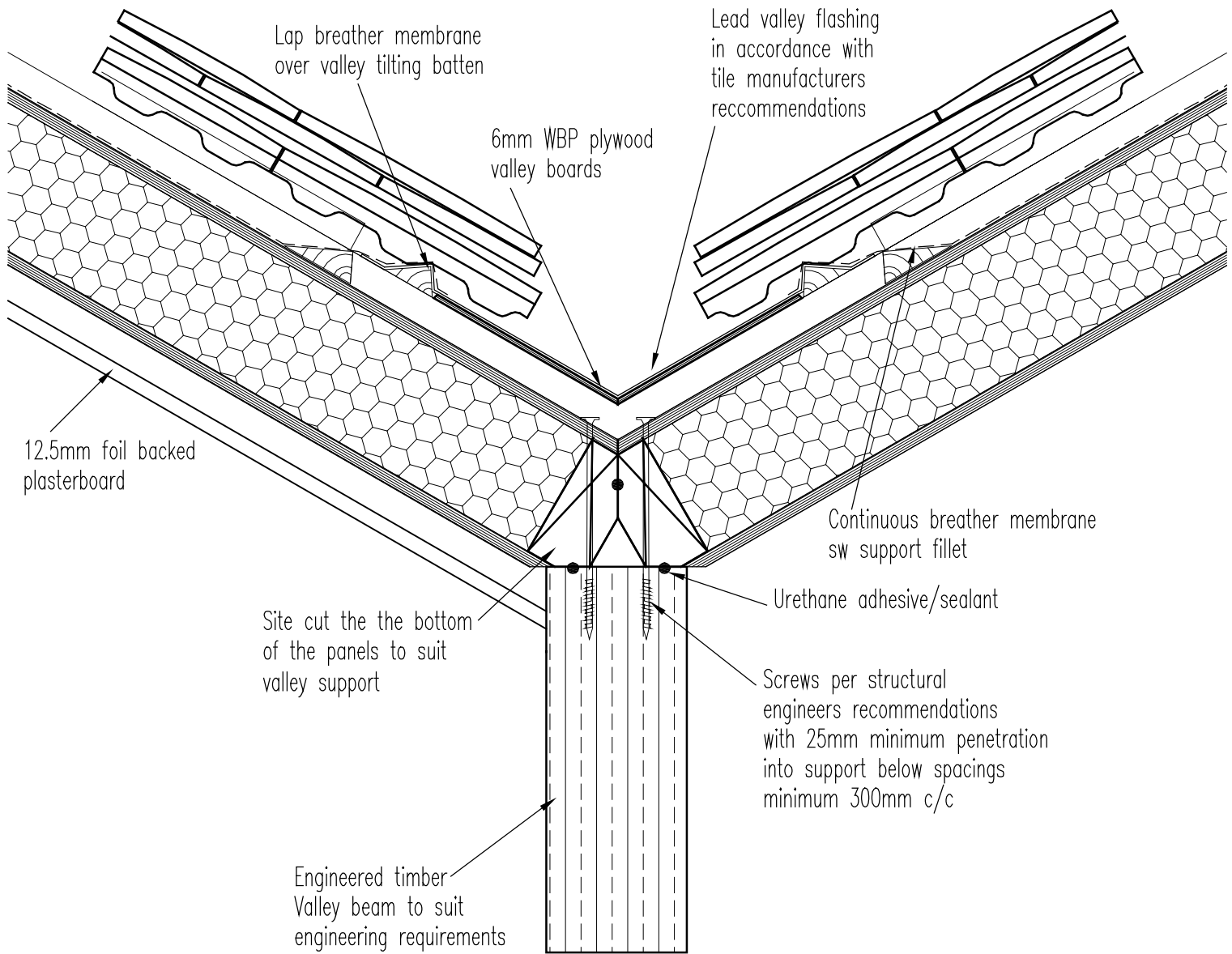
Revisions:

Date:
 August 2004

Drawn by:
 RD

Scale:
 1:5





SIP Building Systems Limited
 Unit 2, Expressway Industrial Estate, Turnhall Road, Ditton,
 Widnes, Cheshire, WA8 8RD.
 Tel: 0870 224 8040 Fax: 0870 224 8041
 Email: sales@sipbuildingsystems.co.uk

Drawing Title:
SBS-SIP
 Valley detail

Revisions:

Date:
 August 2004

Drawn by:
 RD

Scale:
 1:5



Simpson Strong-tie BTS4
Brick ties fixed using
30x4mm dia stainless steel
flangehead SPAX screw's

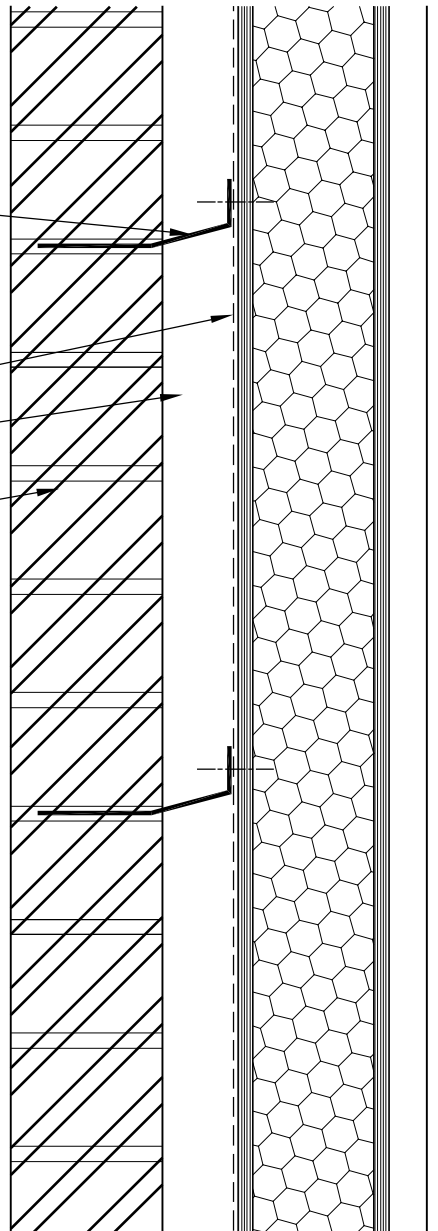
Approved breather membrane

50mm cavity

102mm brickwork
outer leaf

Tie spacing:
Wind speed less or equal to 52m/sec
4.4 ties per m²
spacing horizontal 600mm
vertical 375mm

Wind speed greater than 52m/sec
4.4 ties per m²
spacing horizontal 600mm
vertical 225mm



SIP Building Systems Limited
Unit 2, Expressway Industrial Estate, Turnhall Road, Ditton,
Widnes, Cheshire, WA8 8RD.
Tel: 0870 224 8040 Fax: 0870 224 8041
Email: sales@sipbuildingsystems.co.uk

Drawing Title:

SBS-SIP
Wall tie details

Revisions:

Date:

August 2004

Drawn by:
RD

Scale:
1:5



Simpson Strong-Tie
BTS4 or similar approved

Approved breather
membrane

Secure bottom plate using
3.75x75mm galvanised
ringshank nails @
150mm c/c

Continuous SBS
urethane sealant/
adhesive to be
applied by the contractor

Simpson Strong Tie
SPA 38 or similar
approved sole
plate anchor

Simpson Strong Tie
LFTA restraint strap
or similar approved

SBS wall panel
12.5mm foil backed
plaster board

Secure panel using
2.8x63mm galvanised
ringshank nails
@150mm c/c

50mm treated sw
bottom plate with
chamfered top edges

40mm treated sw
sole plate

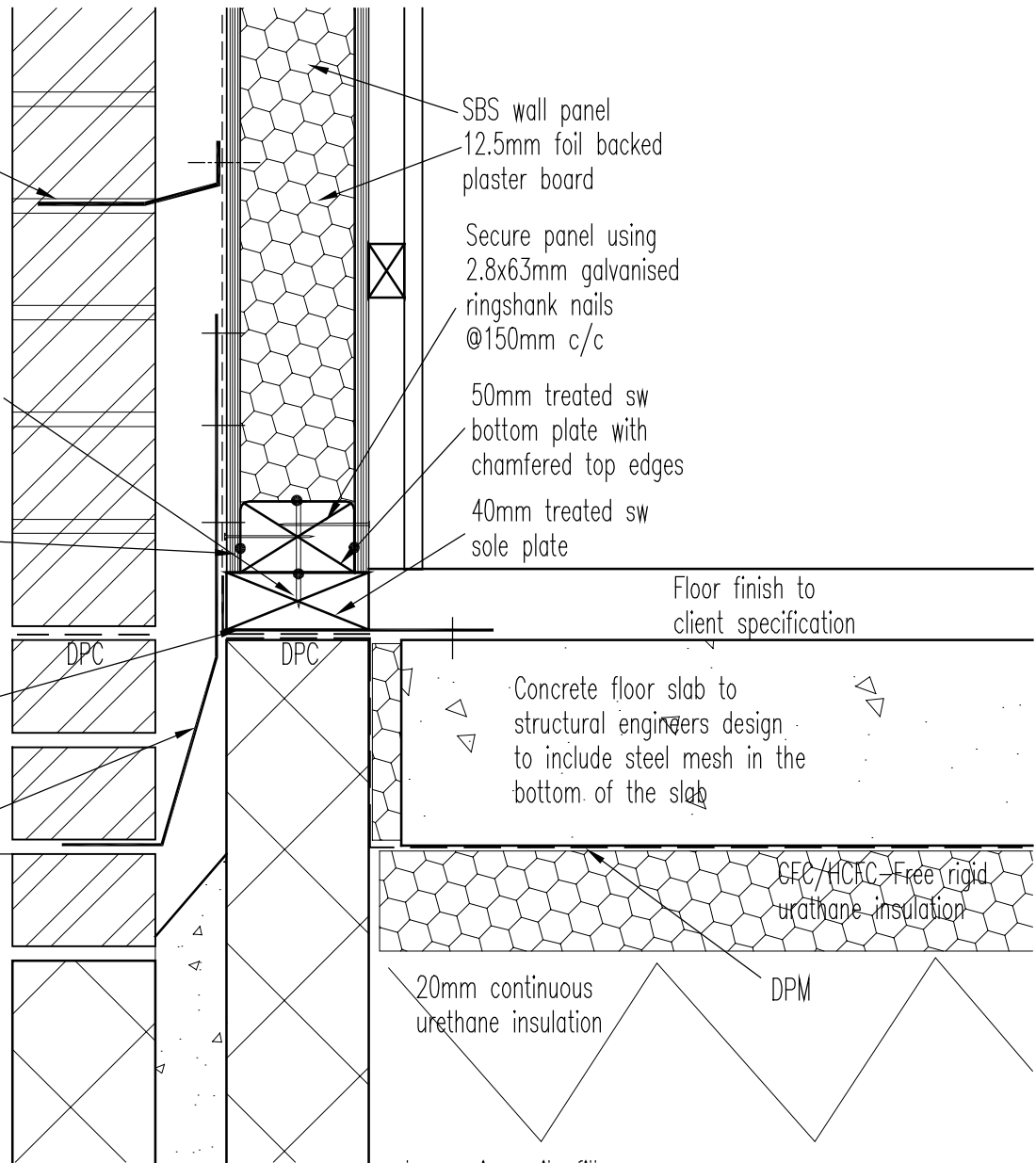
Floor finish to
client specification

Concrete floor slab to
structural engineers design
to include steel mesh in the
bottom of the slab

CFC/HCFC Free rigid
urethane insulation

20mm continuous
urethane insulation

DPM



SIP Building Systems Limited
Unit 2, Expressway Industrial Estate, Turnhall Road, Ditton,
Widnes, Cheshire, WA8 8RD.
Tel: 0870 224 8040 Fax: 0870 224 8041
Email: sales@sipbuildingsystems.co.uk

Drawing Title:

SBS-SIP Alternative
sole plate detail

Revisions:

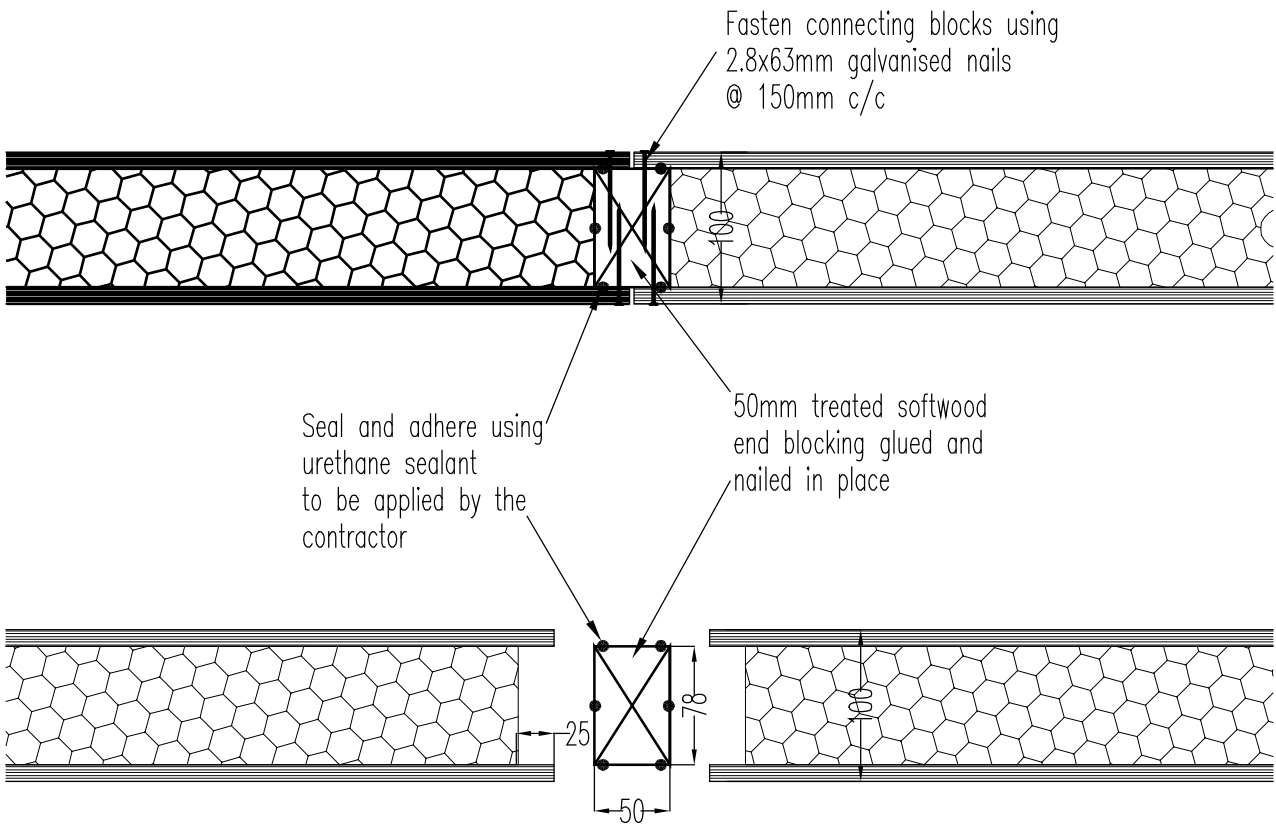
Date:

August 2004

Drawn by:
RD

Scale:
1:5





100mm panel timber post connection detail



SIP Building Systems Limited
Unit 2, Expressway Industrial Estate, Turnhall Road, Ditton,
Widnes, Cheshire, WA8 8RD.
Tel: 0870 224 8040 Fax: 0870 224 8041
Email: sales@sipbuildingsystems.co.uk

Drawing Title:
SBS-SIP 100mm timber
post connection detail

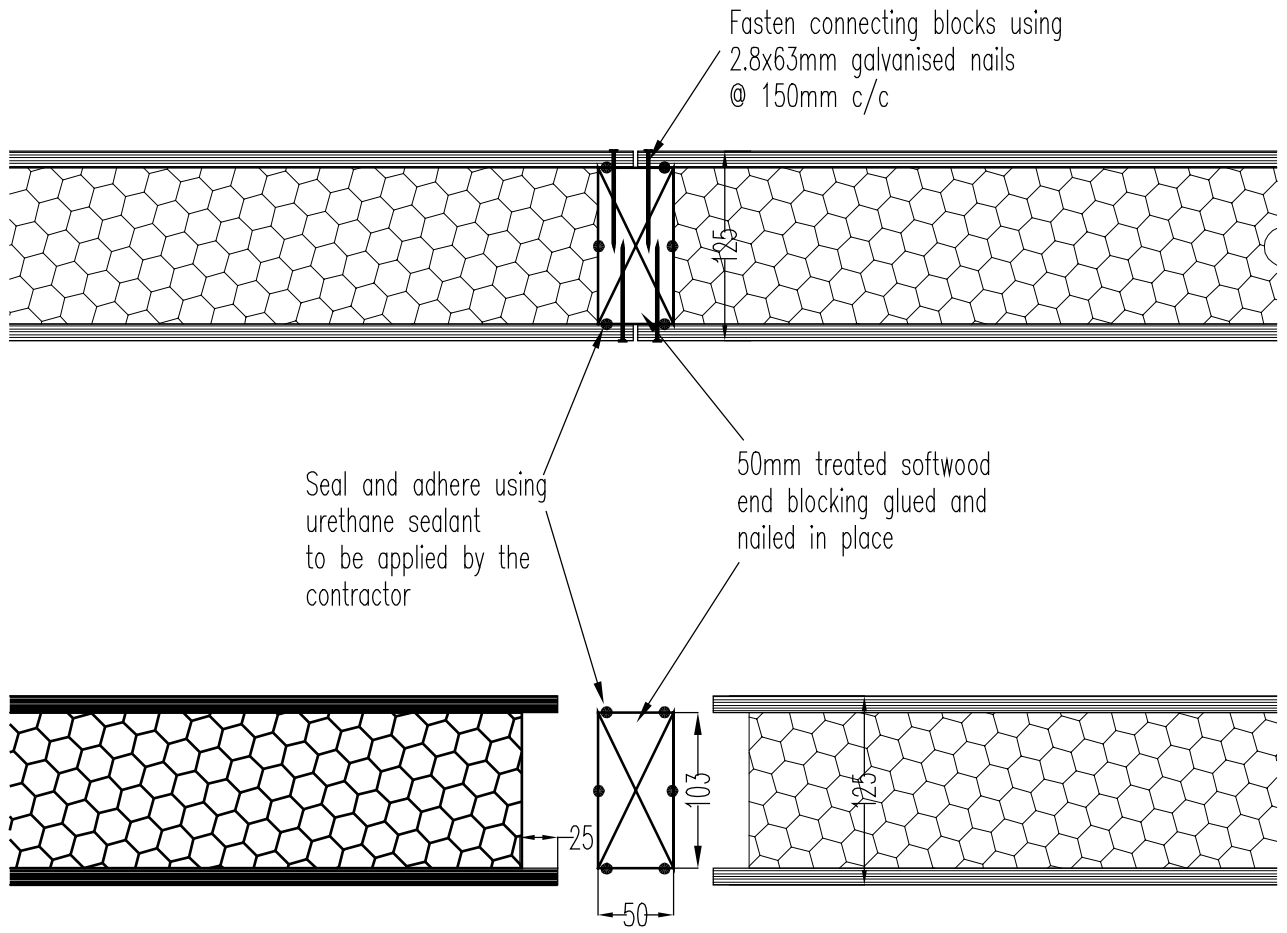
Revisions:

Date:
August 2004

Drawn by:
RD

Scale:
1:5



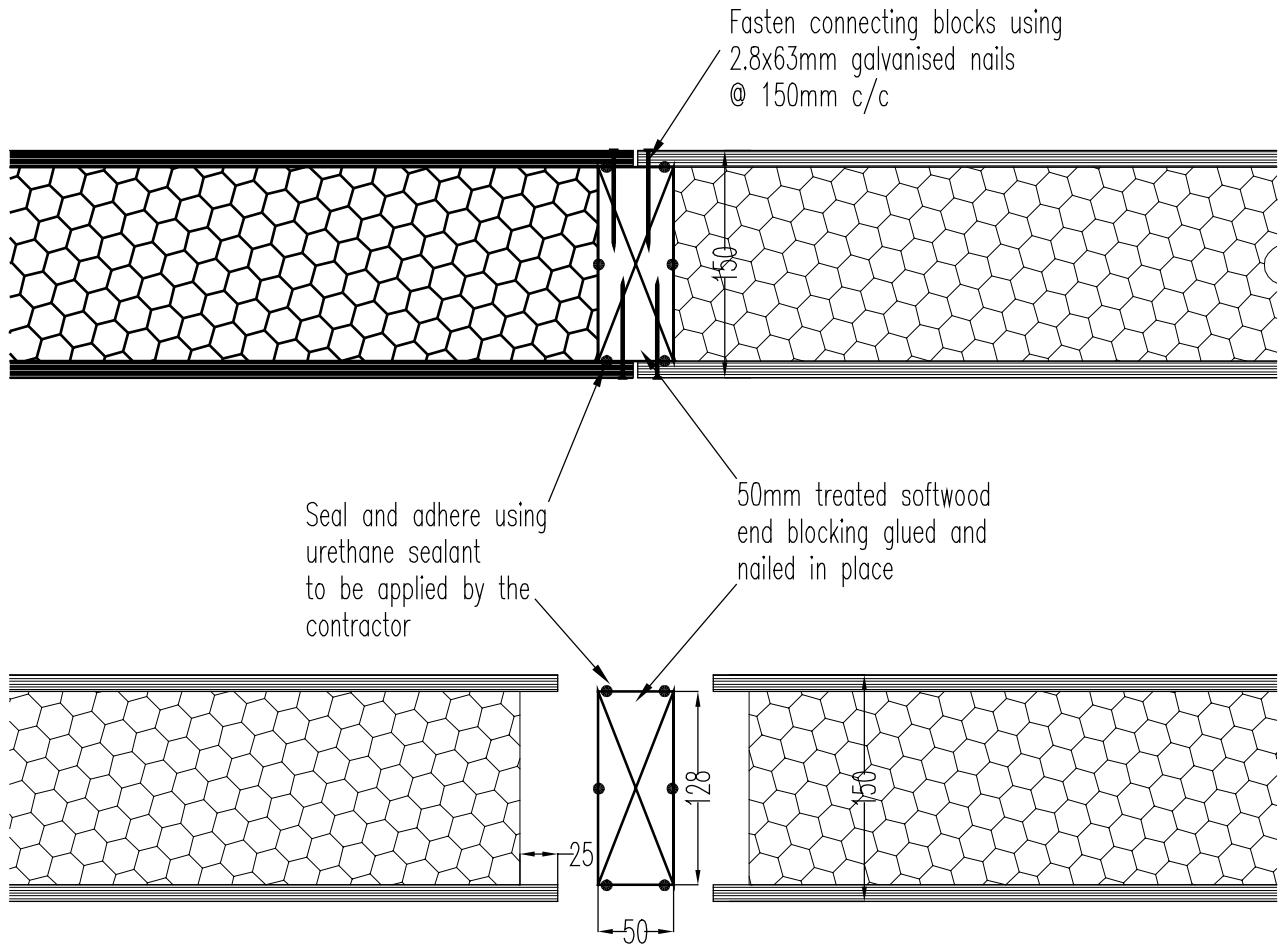


125mm panel timber post connection detail



SIP Building Systems Limited
Unit 2, Expressway Industrial Estate, Turnhall Road, Ditton,
Widnes, Cheshire, WA8 8RD.
Tel: 0870 224 8040 Fax: 0870 224 8041
Email: sales@sipbuildingsystems.co.uk

Drawing Title: SBS-SIP 125mm timber post connection detail	
Revisions:	
Date: August 2004	
Drawn by: RD	



150mm panel timber post connection detail



SIP Building Systems Limited
Unit 2, Expressway Industrial Estate, Turnhall Road, Ditton,
Widnes, Cheshire, WA8 8RD.
Tel: 0870 224 8040 Fax: 0870 224 8041
Email: sales@sipbuildingsystems.co.uk

Drawing Title:

SBS-SIP 150mm timber
post connection detail

Revisions:

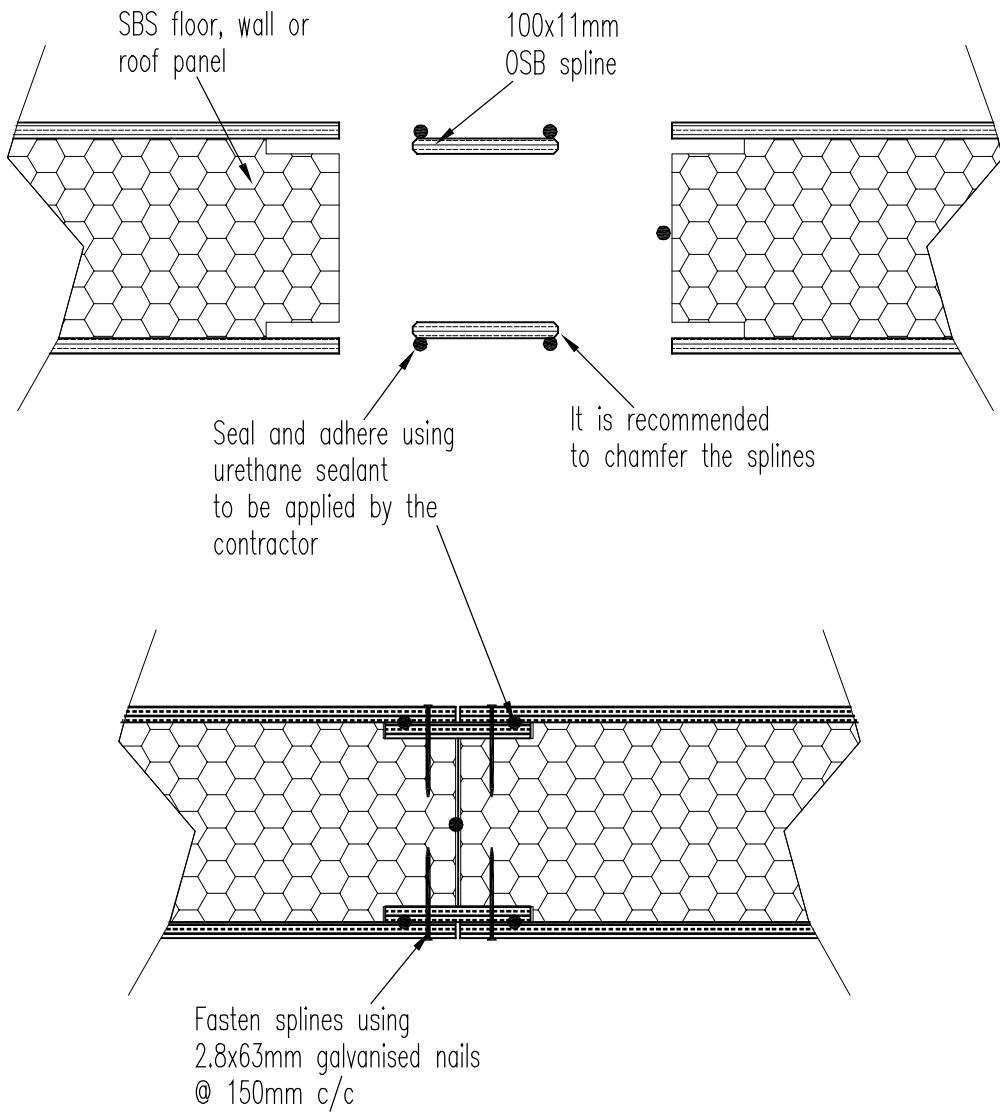
Date:

August 2004

Drawn by:
RD

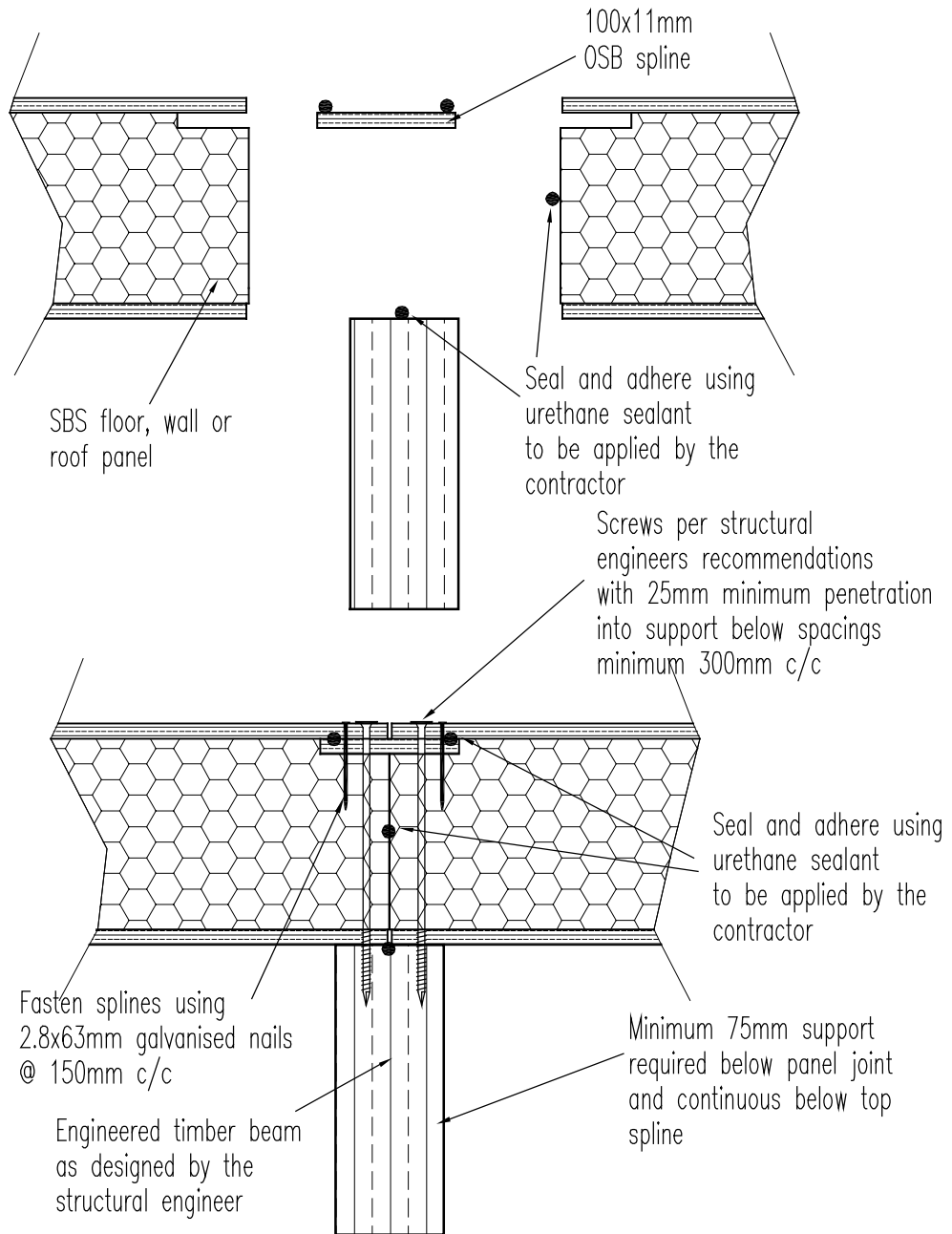
Scale:
1:5





SIP Building Systems Limited
 Unit 2, Expressway Industrial Estate, Turnhall Road, Ditton,
 Widnes, Cheshire, WA8 8RD.
 Tel: 0870 224 8040 Fax: 0870 224 8041
 Email: sales@sipbuildingsystems.co.uk

Drawing Title: SBS-SIP Typical spline connection detail	
Revisions:	
Date: August 2004	
Drawn by: RD	



SIP Building Systems Limited
 Unit 2, Expressway Industrial Estate, Turnhall Road, Ditton,
 Widnes, Cheshire, WA8 8RD.
 Tel: 0870 224 8040 Fax: 0870 224 8041
 Email: sales@sipbuildingsystems.co.uk

Drawing Title:
 SBS-SIP Typical roof spline with support

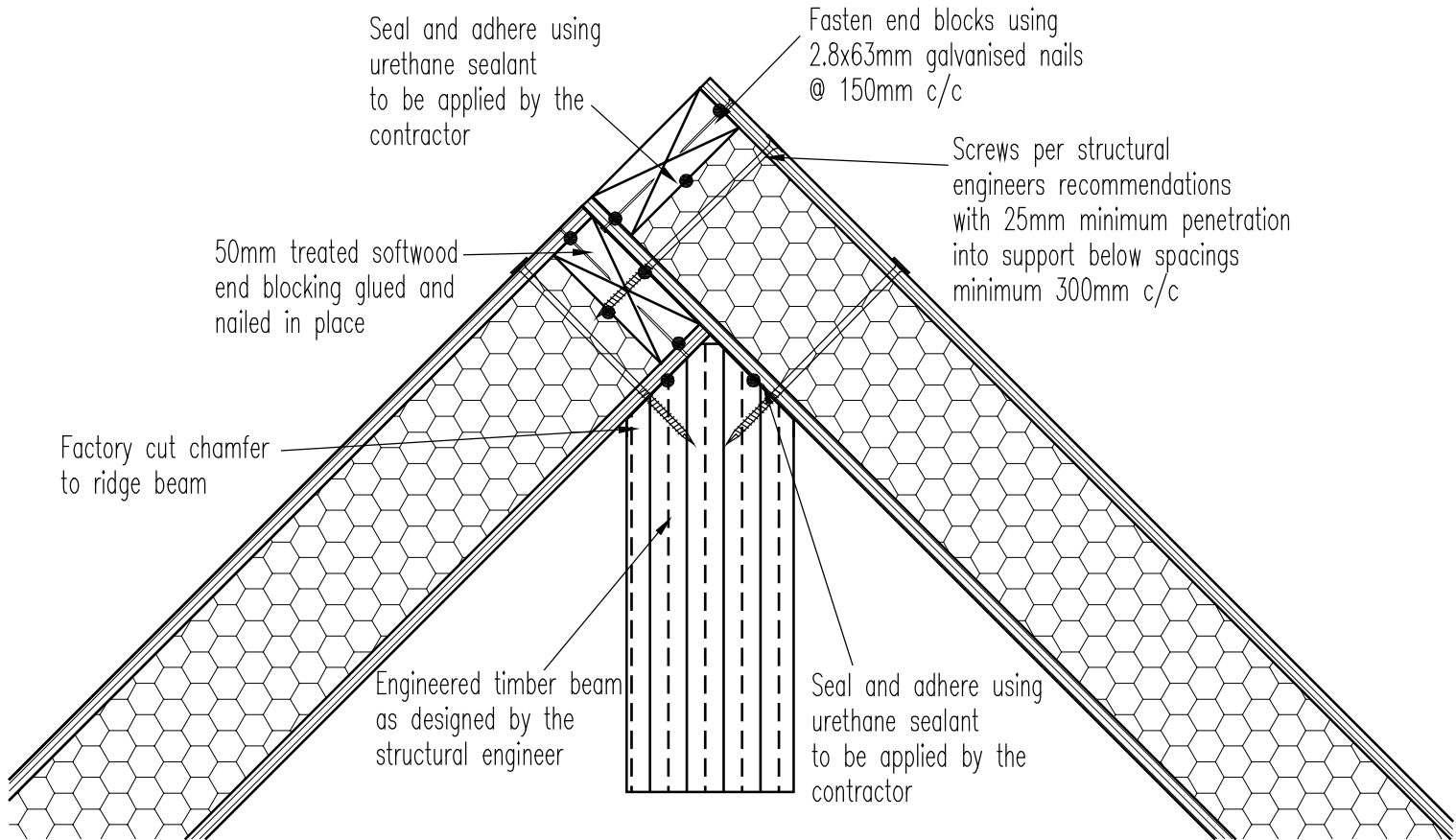
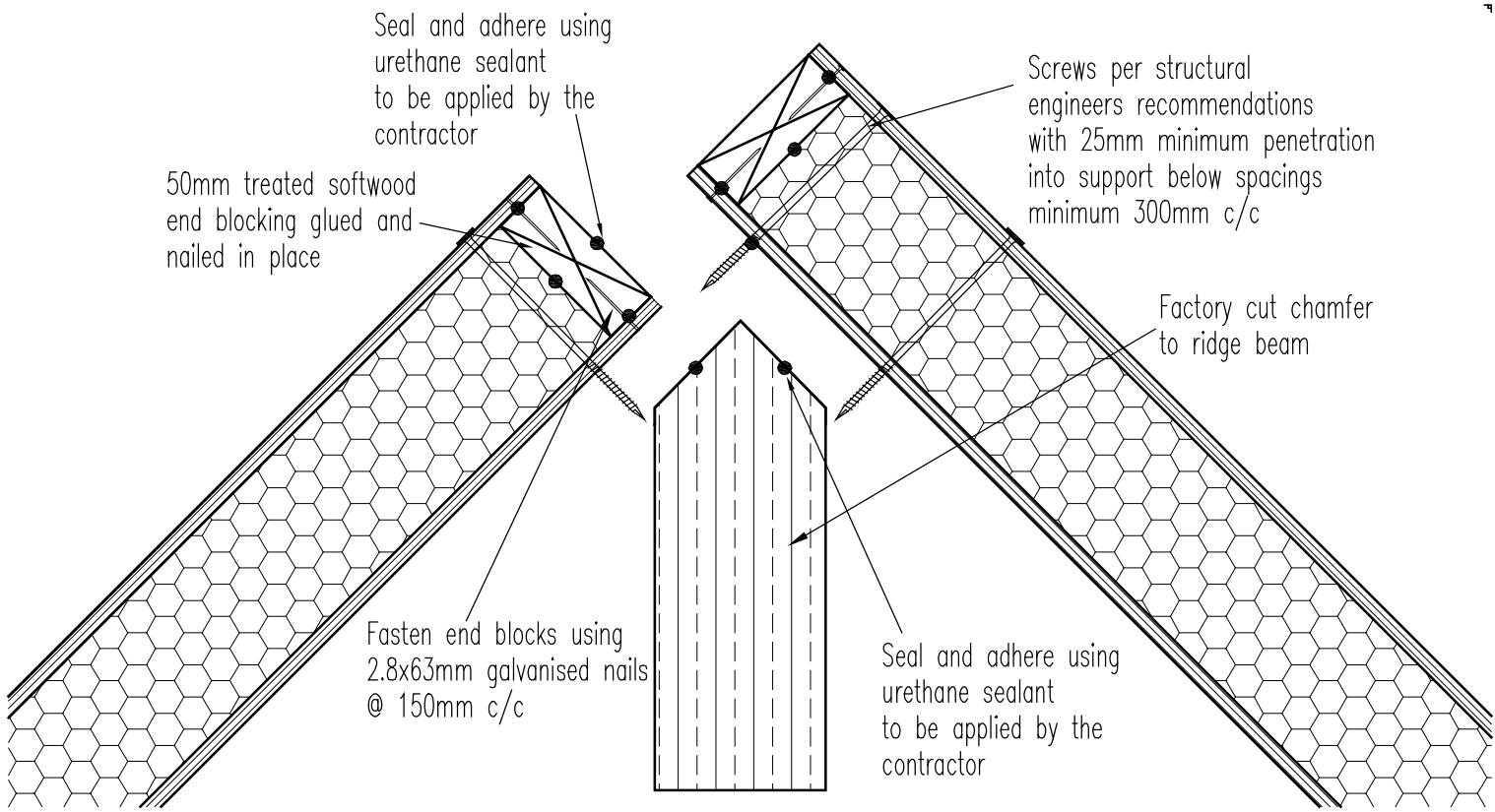
Revisions:

Date:
 August 2004

Drawn by:
 RD

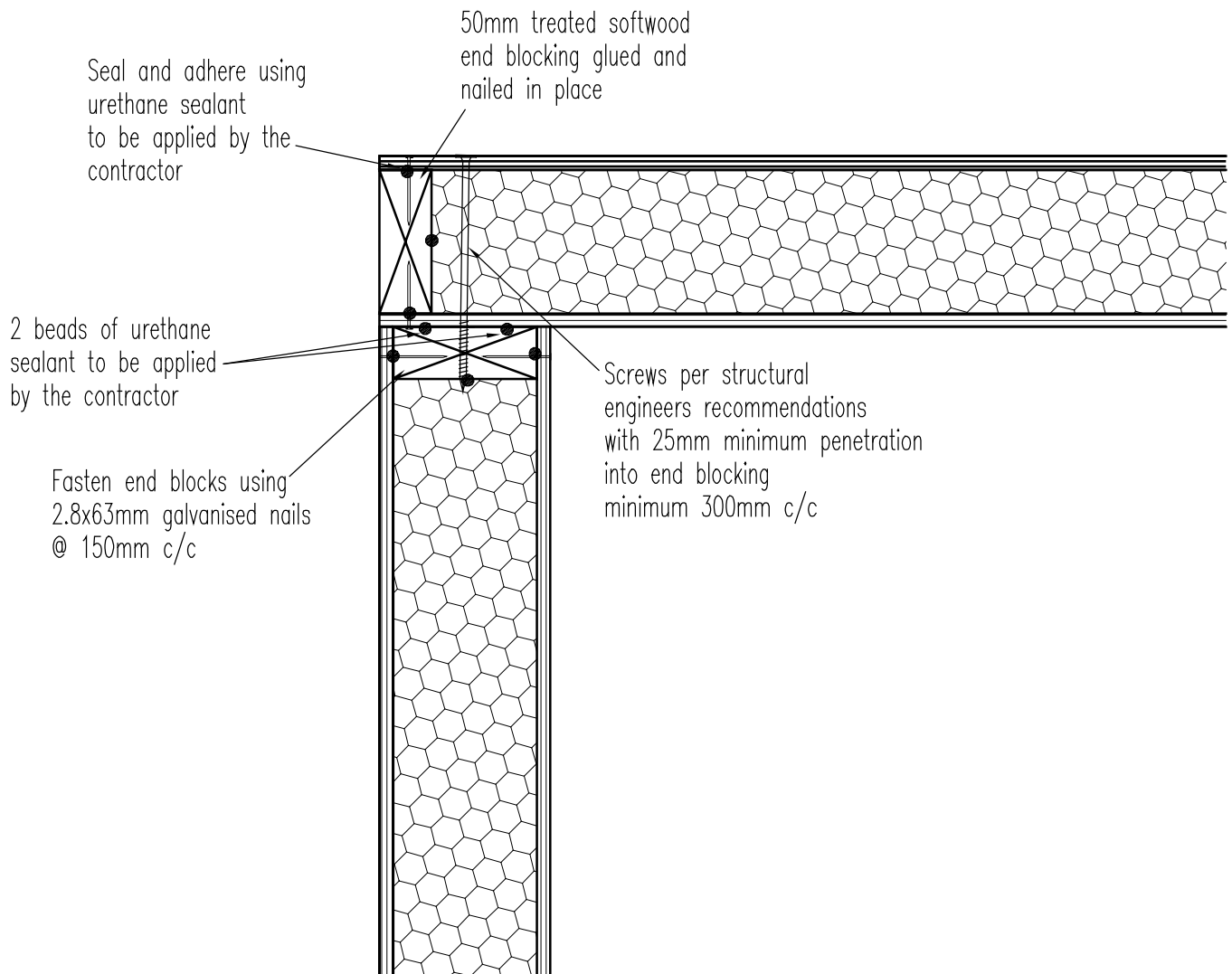
Scale:
 1:5





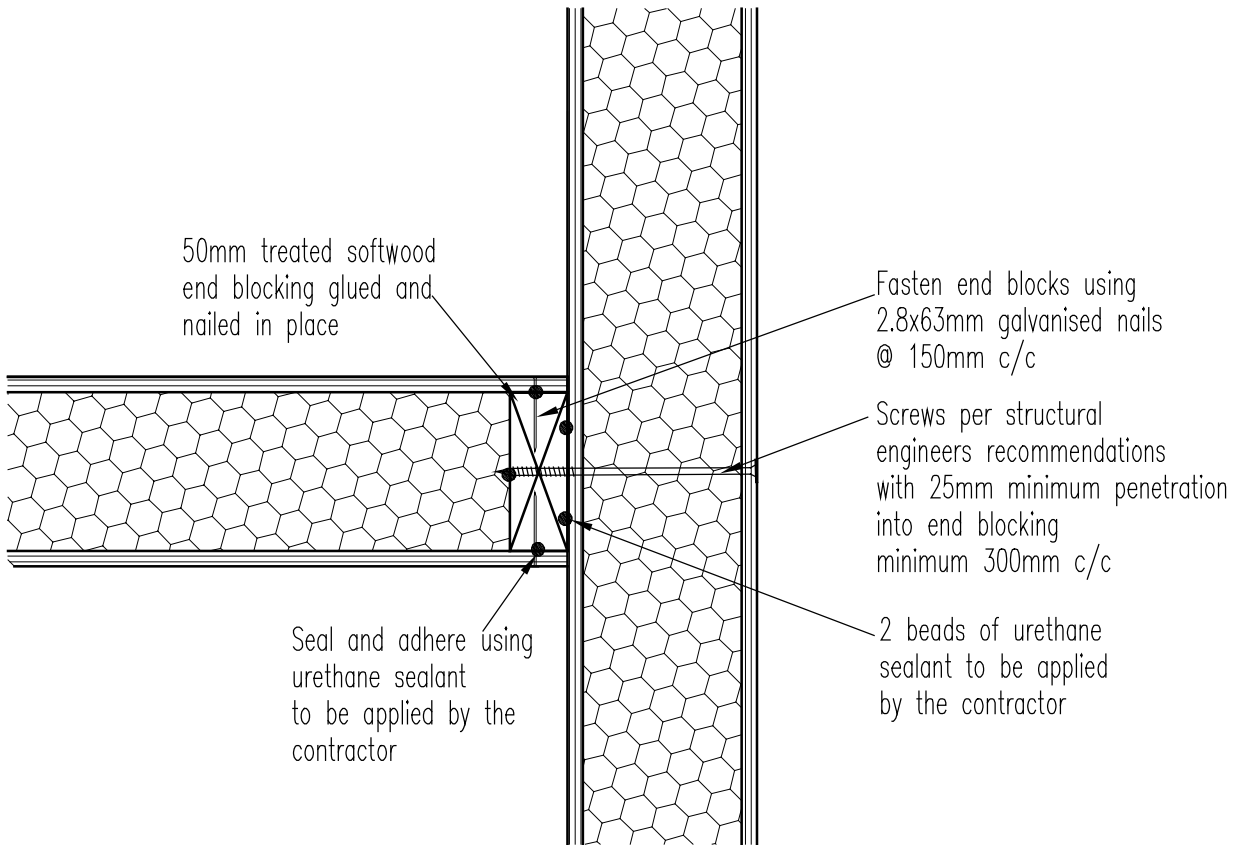
SIP Building Systems Limited
 Unit 2, Expressway Industrial Estate, Turnhall Road, Ditton,
 Widnes, Cheshire, WA8 8RD.
 Tel: 0870 224 8040 Fax: 0870 224 8041
 Email: sales@sipbuildingsystems.co.uk

Drawing Title: SBS-SIP 45° ridge detail	
Revisions:	
Date: August 2004	SBS SIP 17
Drawn by: RD	



SIP Building Systems Limited
 Unit 2, Expressway Industrial Estate, Turnhall Road, Ditton,
 Widnes, Cheshire, WA8 8RD.
 Tel: 0870 224 8040 Fax: 0870 224 8041
 Email: sales@sipbuildingsystems.co.uk

Drawing Title: SBS-SIP Corner connection detail	
Revisions:	
Date: August 2004	
Drawn by: RD	



SIP Building Systems Limited
 Unit 2, Expressway Industrial Estate, Turnhall Road, Ditton,
 Widnes, Cheshire, WA8 8RD.
 Tel: 0870 224 8040 Fax: 0870 224 8041
 Email: sales@sipbuildingsystems.co.uk

Drawing Title:
 SBS-SIP T-junction
 connection detail

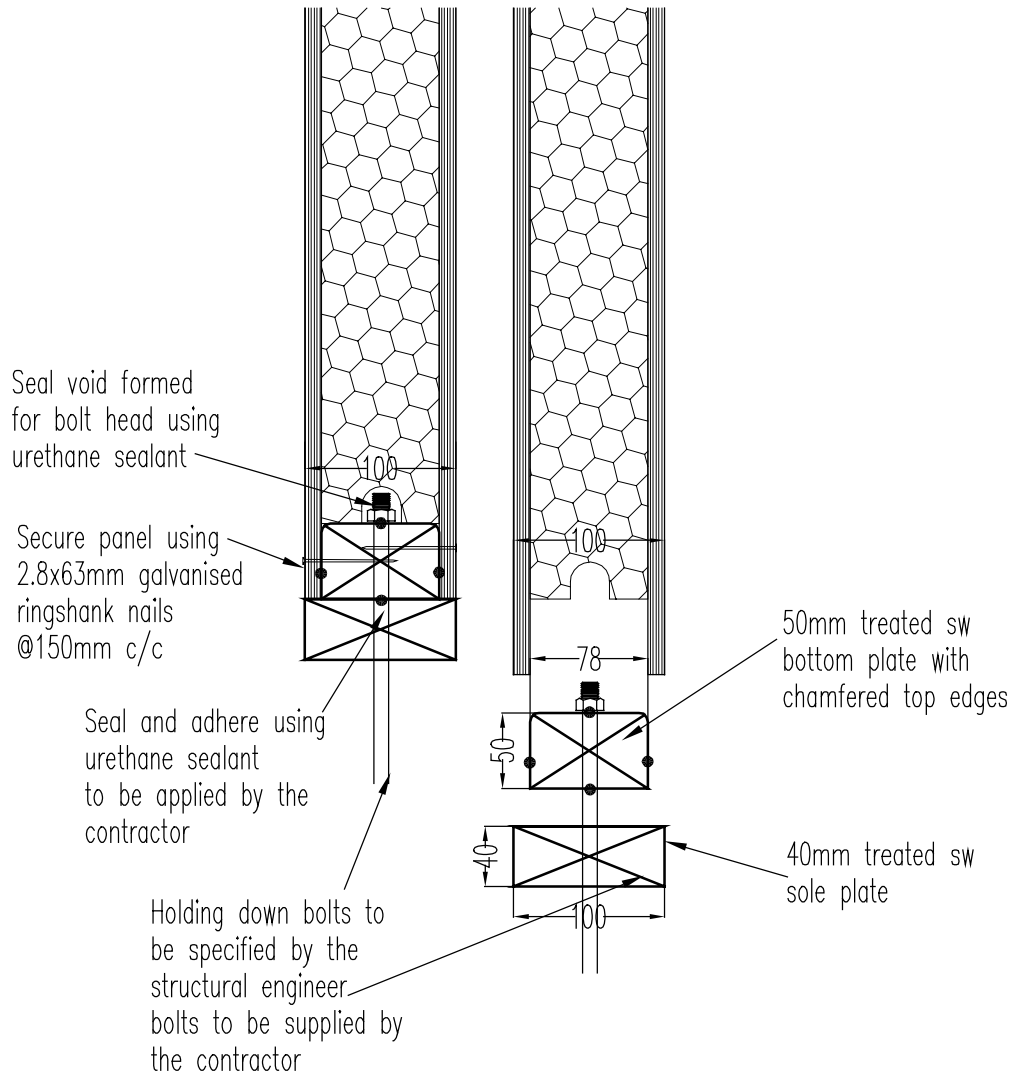
Revisions:

Date:
 August 2004

Drawn by:
 RD

Scale:
 1:5





100mm panel timber post connection detail



SIP Building Systems Limited
 Unit 2, Expressway Industrial Estate, Turnhall Road, Ditton,
 Widnes, Cheshire, WA8 8RD.
 Tel: 0870 224 8040 Fax: 0870 224 8041
 Email: sales@sipbuildingsystems.co.uk

Drawing Title:
 SBS-SIP sole plate
 100mm timber sizes

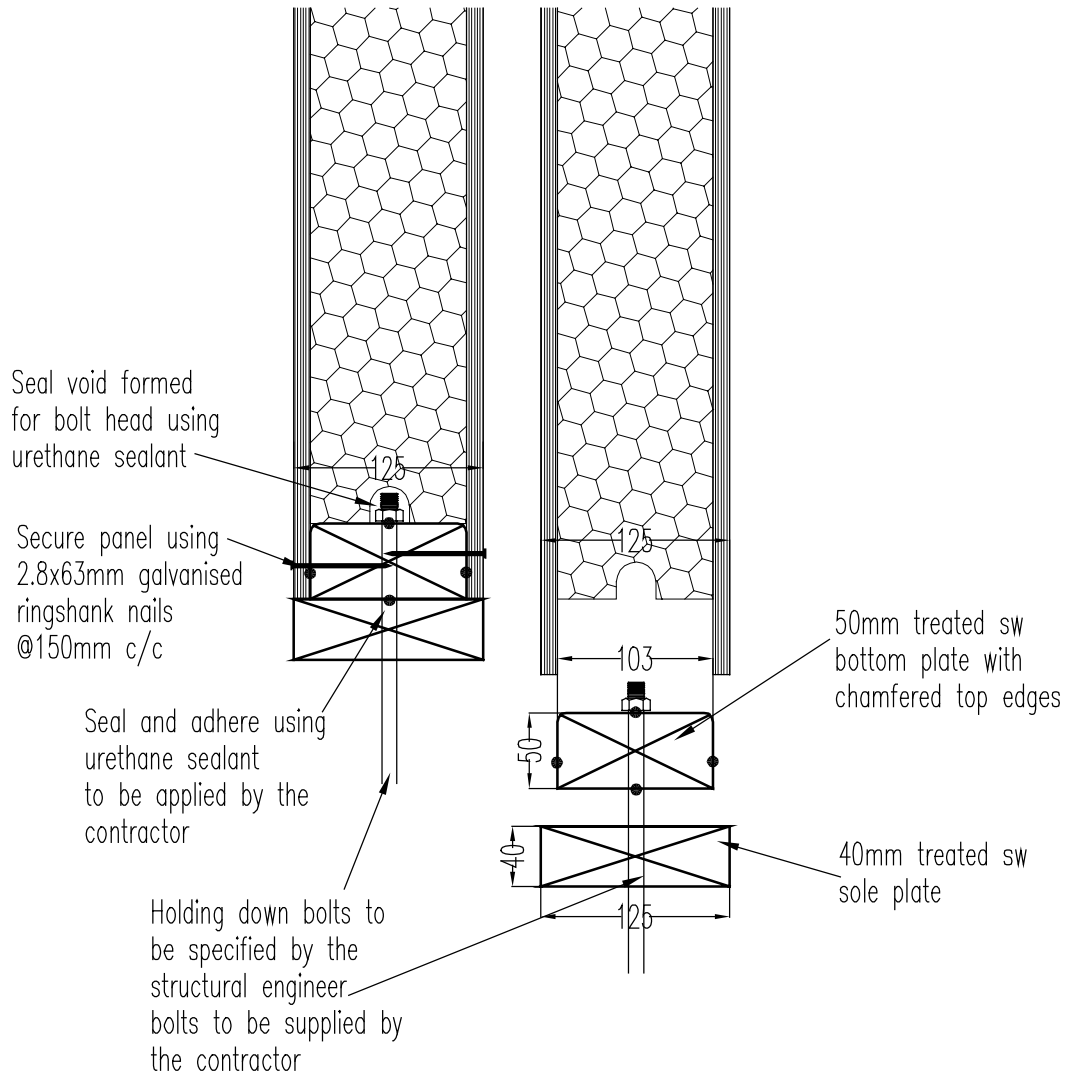
Revisions:

Date:
 August 2004

Drawn by:
 RD

Scale:
 1:5





125mm panel timber post connection detail



SIP Building Systems Limited
 Unit 2, Expressway Industrial Estate, Turnhall Road, Ditton,
 Widnes, Cheshire, WA8 8RD.
 Tel: 0870 224 8040 Fax: 0870 224 8041
 Email: sales@sipbuildingsystems.co.uk

Drawing Title:
 SBS-SIP sole plate
 125mm timber sizes

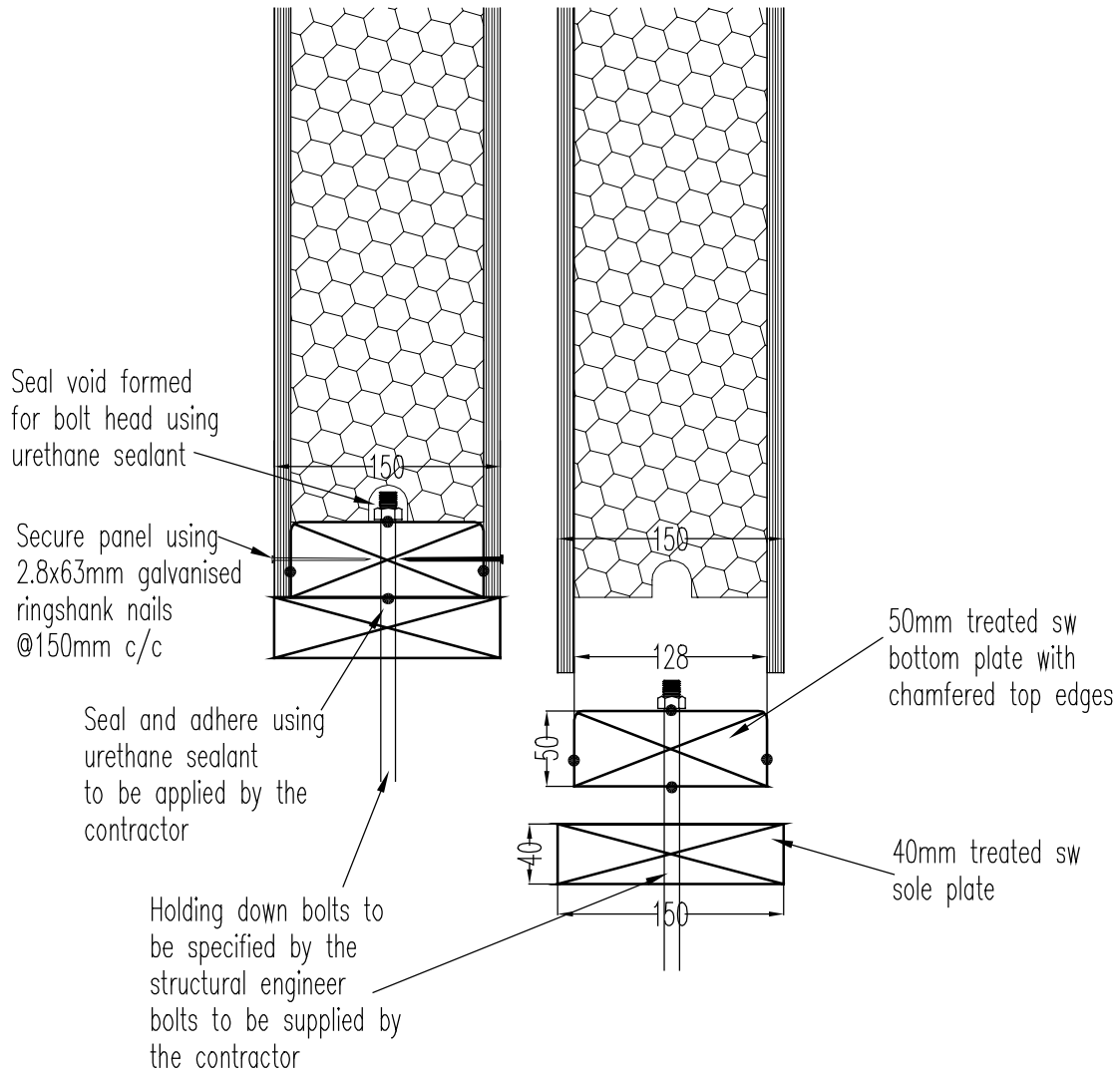
Revisions:

Date:
 August 2004

Drawn by:
 RD

Scale:
 1:5





150mm panel timber post connection detail



SIP Building Systems Limited
 Unit 2, Expressway Industrial Estate, Turnhall Road, Ditton,
 Widnes, Cheshire, WA8 8RD.
 Tel: 0870 224 8040 Fax: 0870 224 8041
 Email: sales@sipbuildingsystems.co.uk

Drawing Title:
 SBS-SIP sole plate
 150mm timber sizes

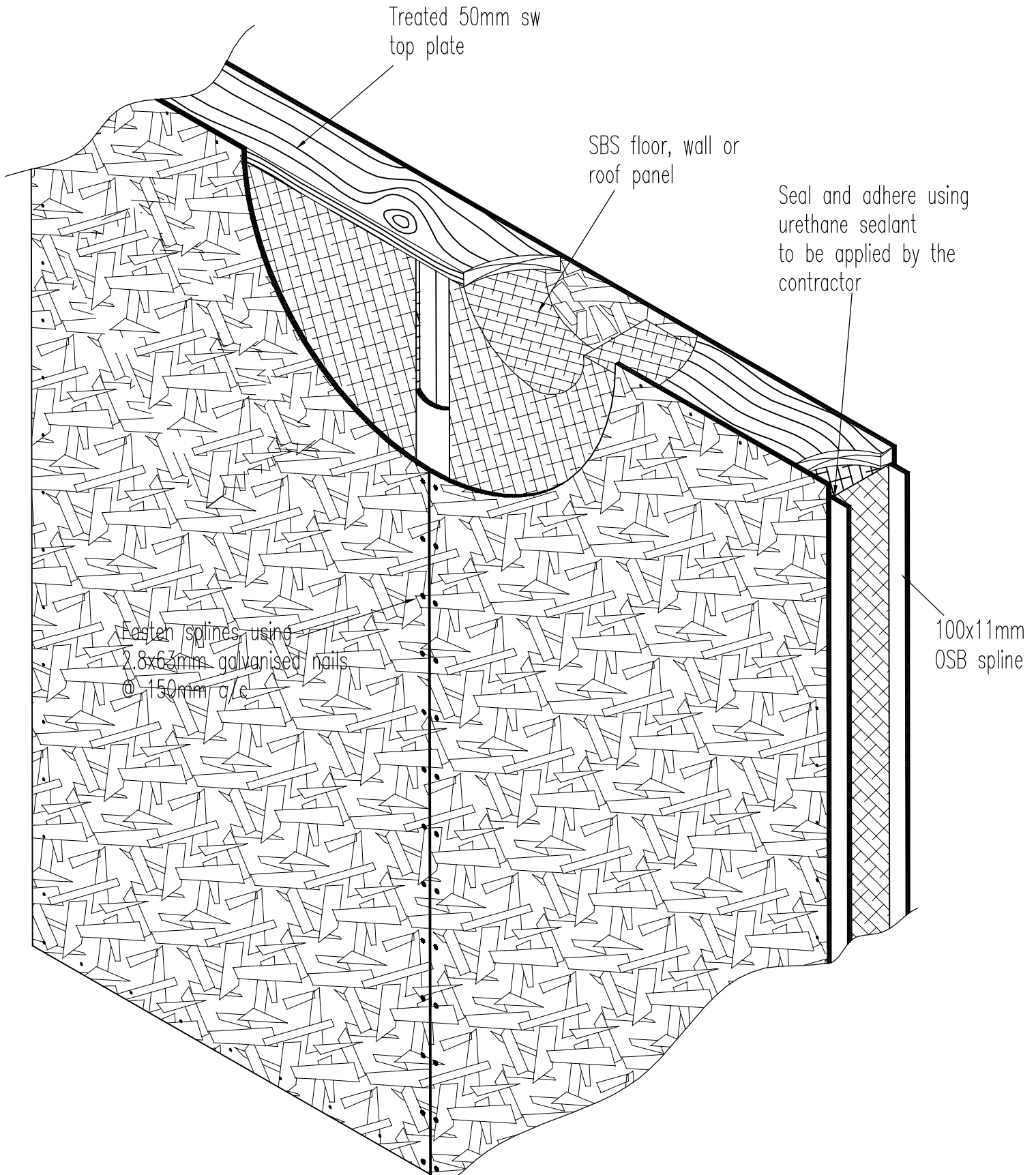
Revisions:

Date:
 August 2004

Drawn by:
 RD

Scale:
 1:5





SIP Building Systems Limited
 Unit 2, Expressway Industrial Estate, Turnhall Road, Ditton,
 Widnes, Cheshire, WA8 8RD.
 Tel: 0870 224 8040 Fax: 0870 224 8041
 Email: sales@sipbuildingsystems.co.uk

Drawing Title:
 SBS-SIP 3d general
 arrangement spline joint

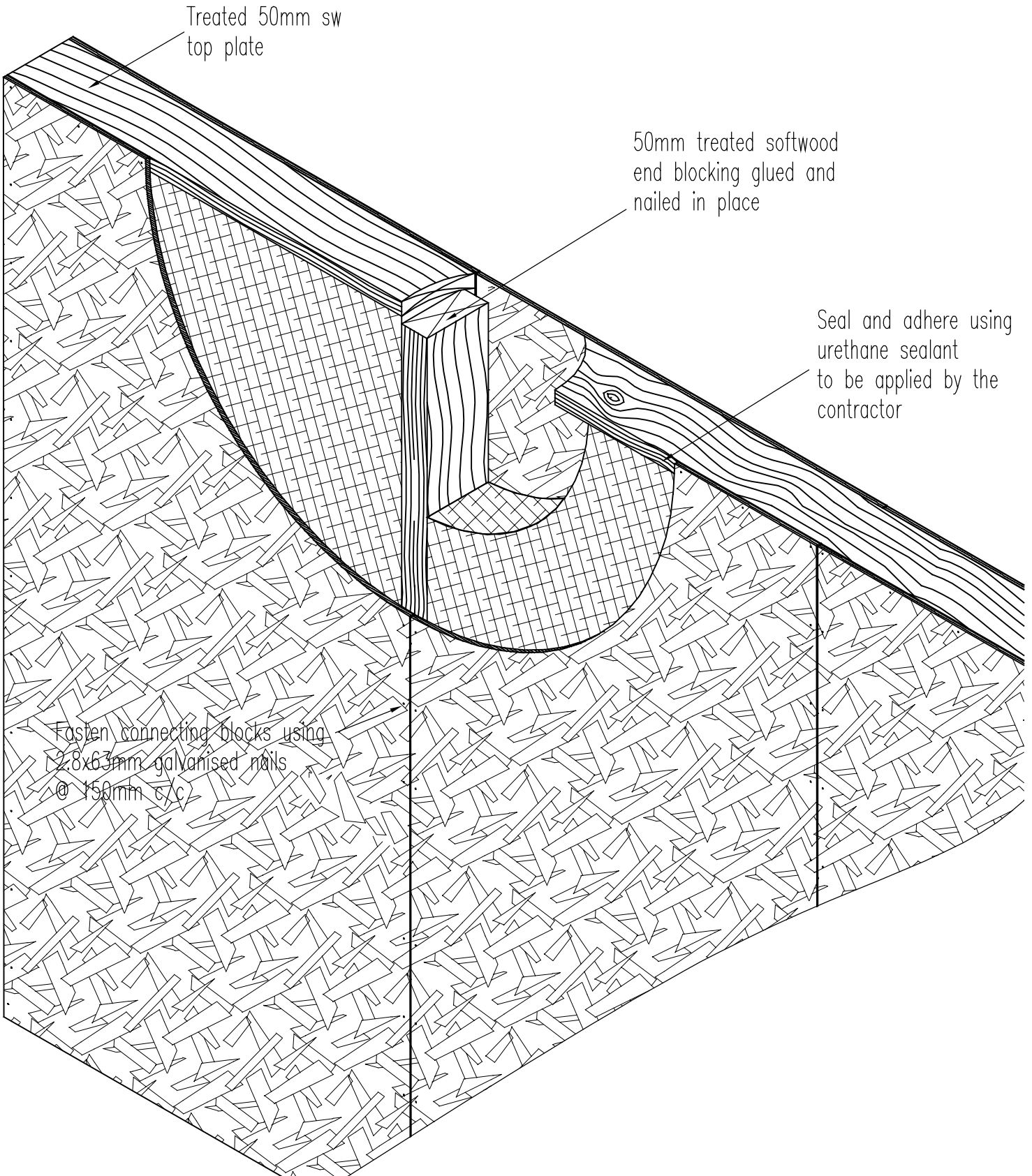
Revisions:

Date:
 August 2004

Drawn by:
 RD

Scale:
 NTS





Treated 50mm sw top plate

50mm treated softwood end blocking glued and nailed in place

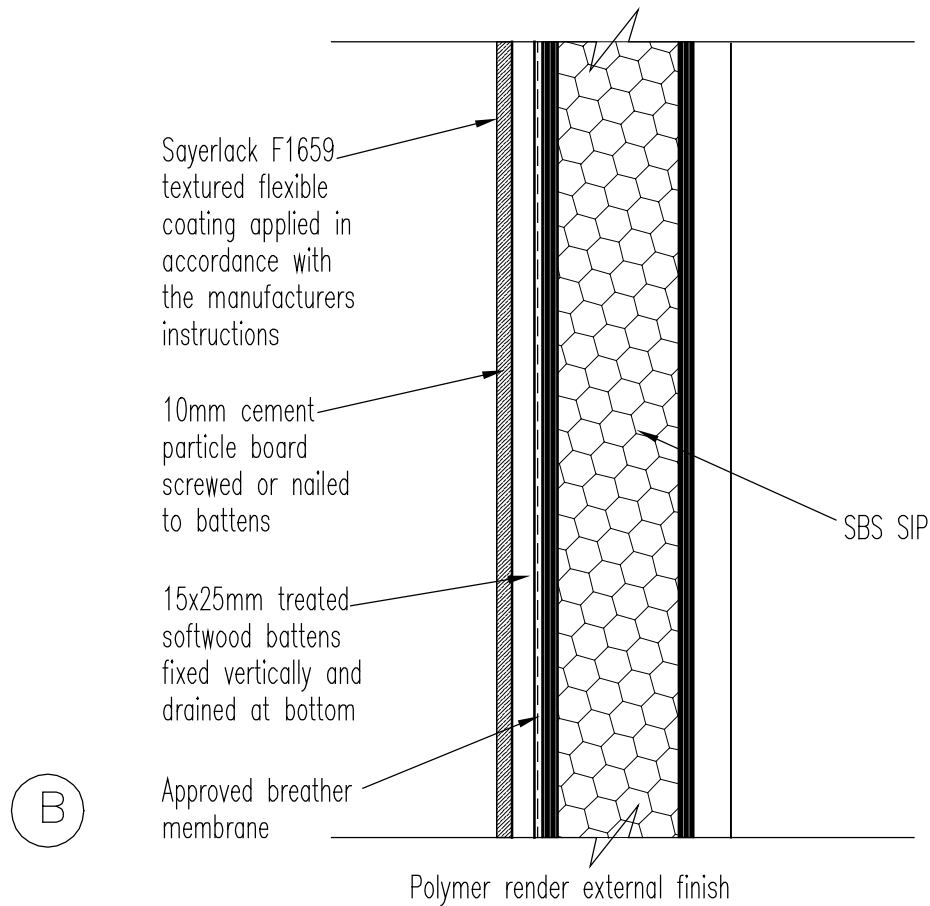
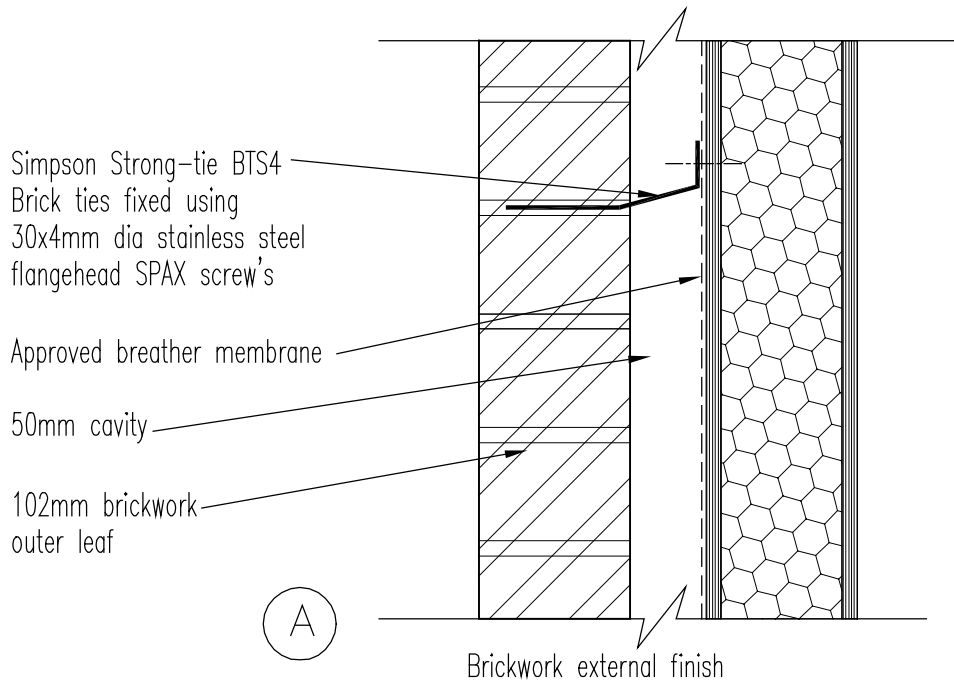
Seal and adhere using urethane sealant to be applied by the contractor

Fasten connecting blocks using 2.8x63mm galvanised nails @ 150mm c/c



SIP Building Systems Limited
 Unit 2, Expressway Industrial Estate, Turnhall Road, Ditton,
 Widnes, Cheshire, WA8 8RD.
 Tel: 0870 224 8040 Fax: 0870 224 8041
 Email: sales@sipbuildingsystems.co.uk

Drawing Title: SBS-SIP 3d general arrangement post joint	
Revisions:	
Date: August 2004	
Drawn by: RD	



SIP Building Systems Limited
Unit 2, Expressway Industrial Estate, Turnhall Road, Ditton,
Widnes, Cheshire, WA8 8RD.
Tel: 0870 224 8040 Fax: 0870 224 8041
Email: sales@sipbuildingsystems.co.uk

Drawing Title:
SBS-SIP
external finishes A&B

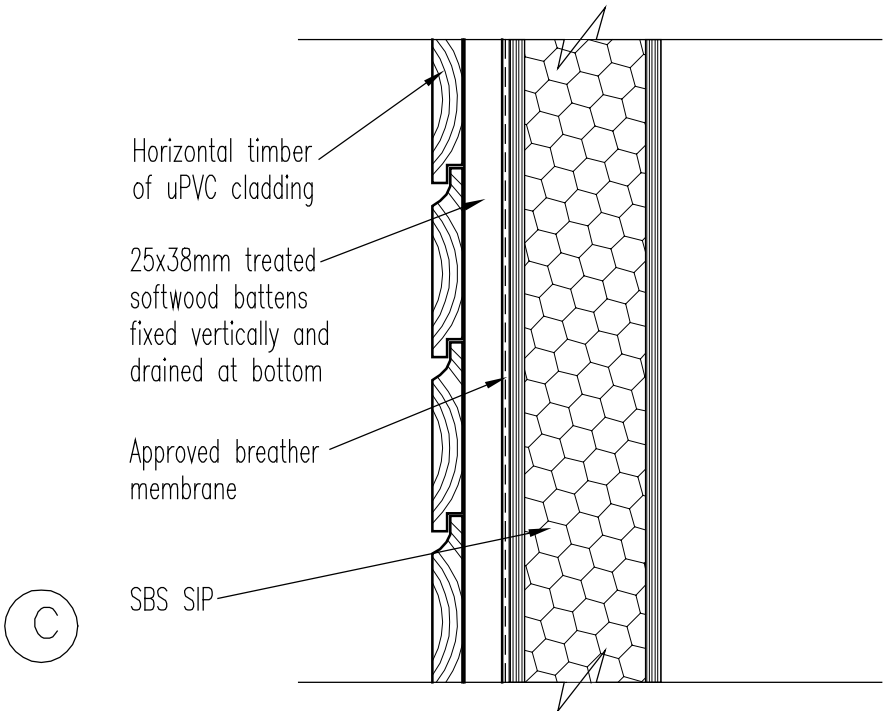
Revisions:

Date:
August 2004

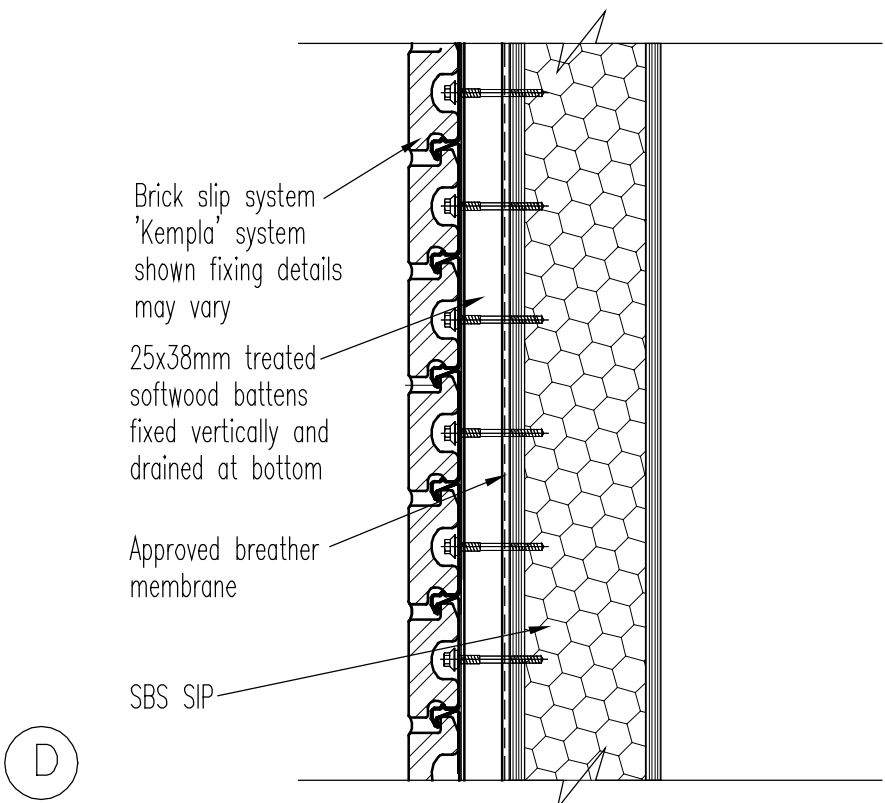
Drawn by:
RD

Scale:
1:5





Note for vertical cladding a 25x38mm counter batten will be required

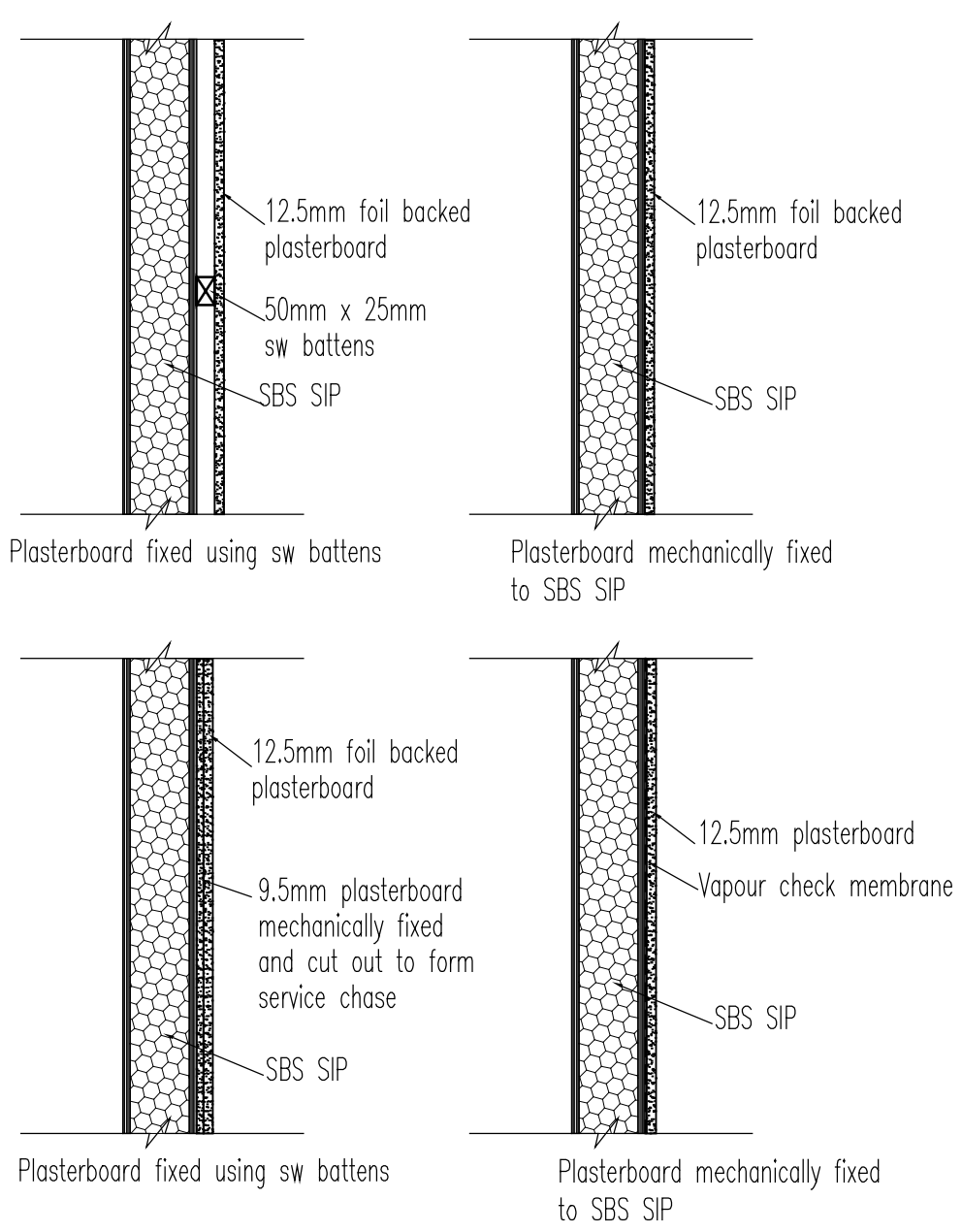


Note for vertical cladding a 25x38mm counter batten will be required



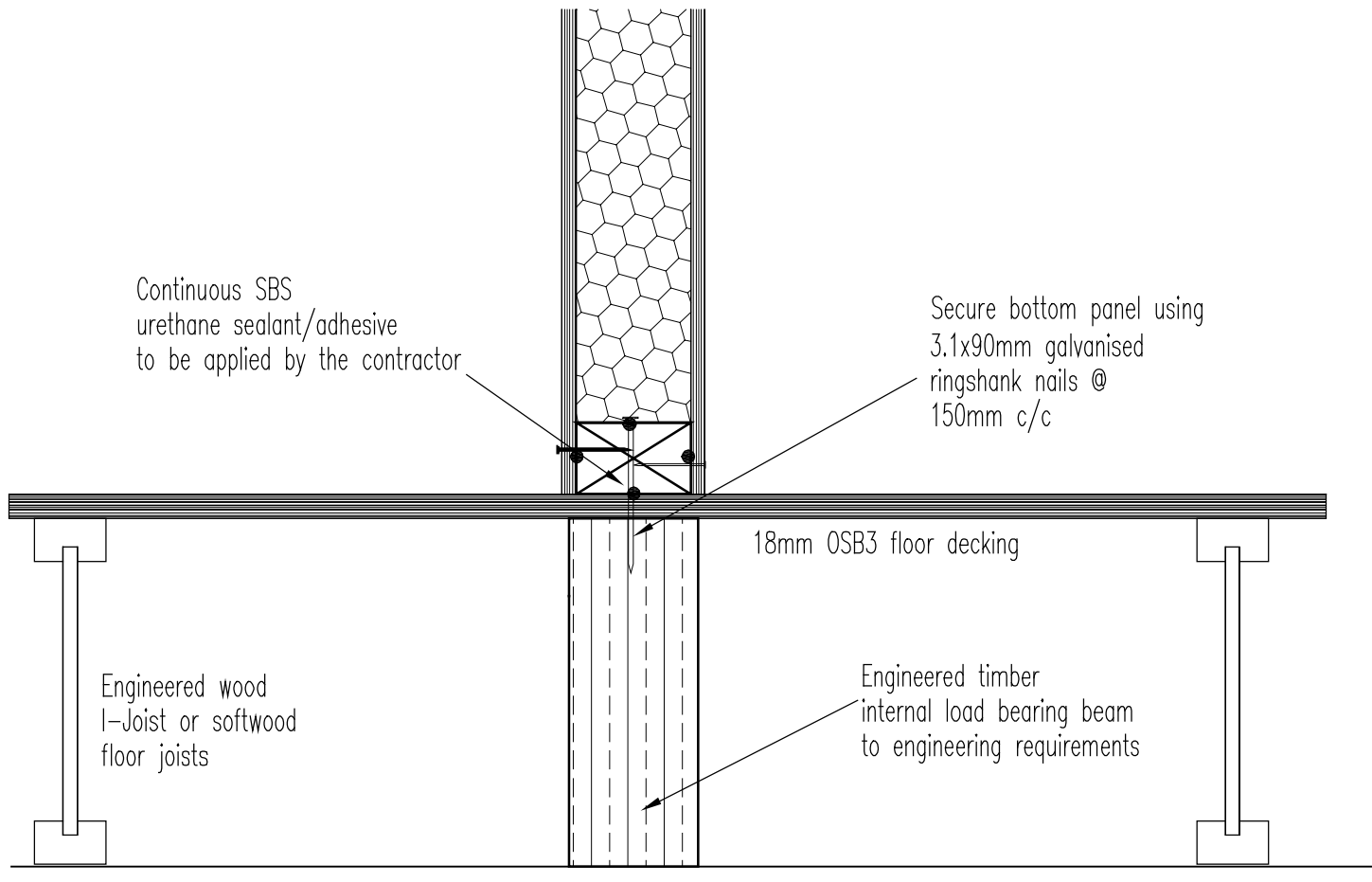
SIP Building Systems Limited
 Unit 2, Expressway Industrial Estate, Turnhall Road, Ditton,
 Widnes, Cheshire, WA8 8RD.
 Tel: 0870 224 8040 Fax: 0870 224 8041
 Email: sales@sipbuildingsystems.co.uk

Drawing Title: SBS-SIP external finishes C&D	
Revisions:	
Date: August 2004	
Drawn by: RD	



SIP Building Systems Limited
 Unit 2, Expressway Industrial Estate, Turnhall Road, Ditton,
 Widnes, Cheshire, WA8 8RD.
 Tel: 0870 224 8040 Fax: 0870 224 8041
 Email: sales@sipbuildingsystems.co.uk

Drawing Title: SBS-SIP internal finishes A&B	
Revisions:	
Date: August 2004	
Drawn by: RD	



SIP Building Systems Limited
 Unit 2, Expressway Industrial Estate, Turnhall Road, Ditton,
 Widnes, Cheshire, WA8 8RD.
 Tel: 0870 224 8040 Fax: 0870 224 8041
 Email: sales@sipbuildingsystems.co.uk

Drawing Title:
 SBS-SIP Internal load bearing floor beam

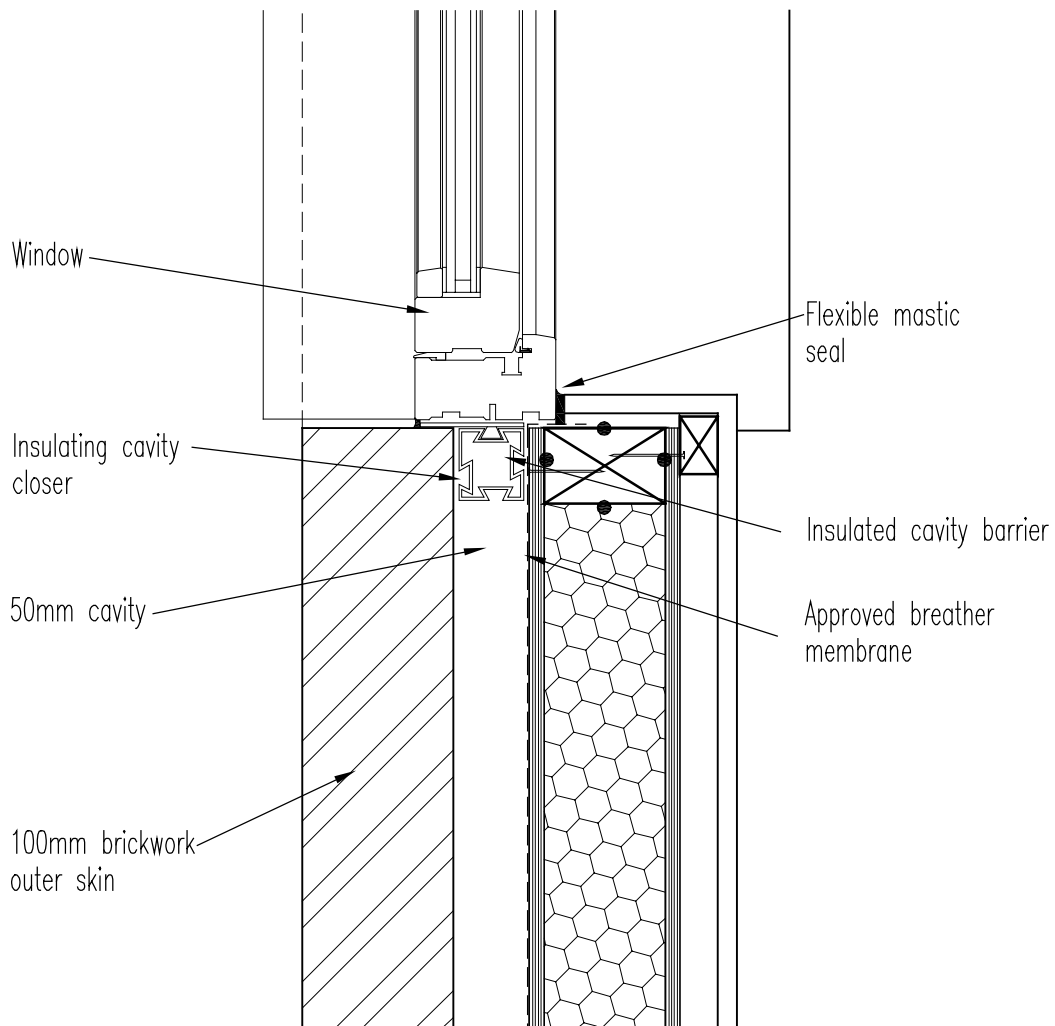
Revisions:

Date:
 August 2004

Drawn by:
 RD

Scale:
 1:5





SIP Building Systems Limited
 Unit 2, Expressway Industrial Estate, Turnhall Road, Ditton,
 Widnes, Cheshire, WA8 8RD.
 Tel: 0870 224 8040 Fax: 0870 224 8041
 Email: sales@sipbuildingsystems.co.uk

Drawing Title:
 SBS-SIP
 window jamb detail

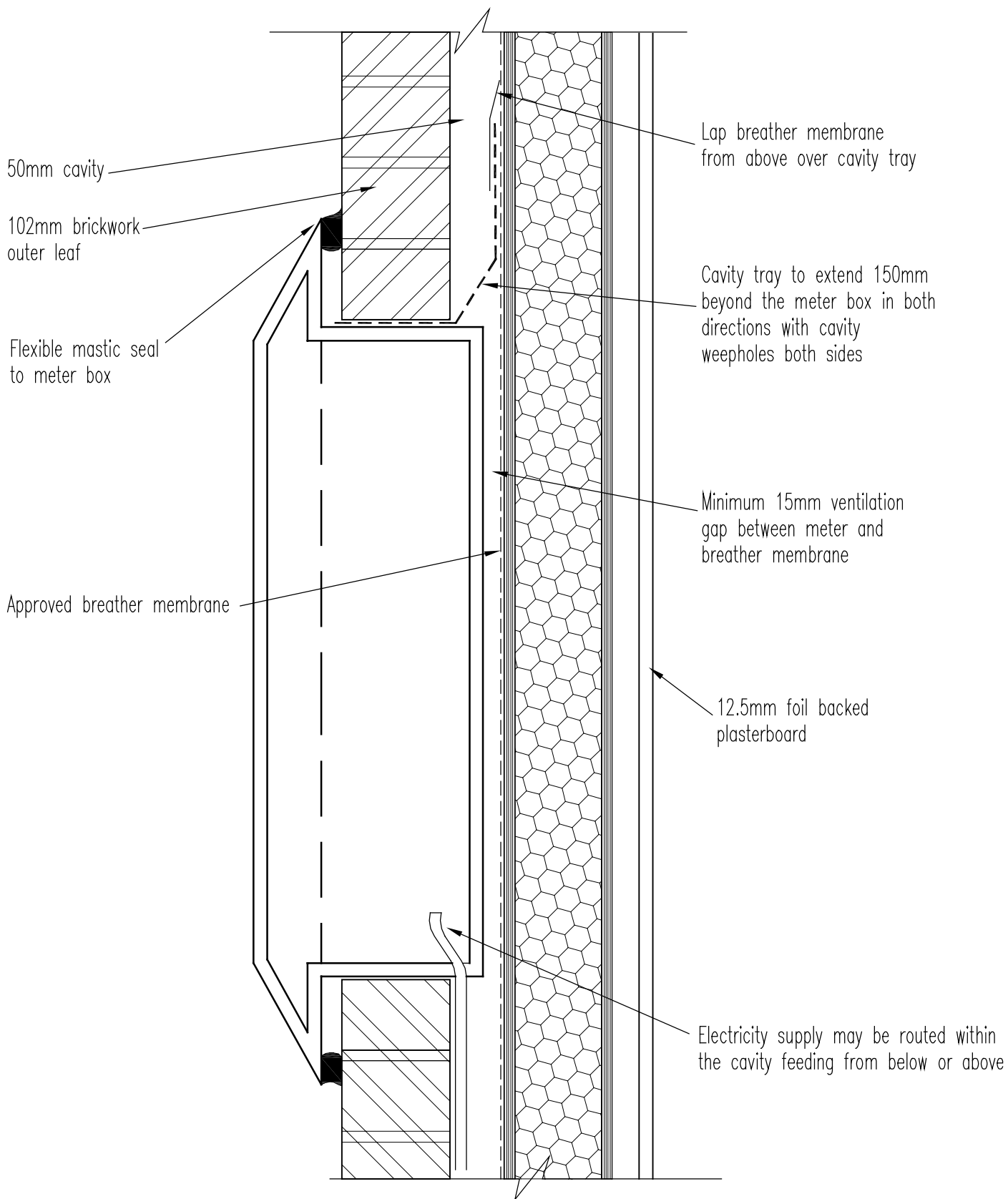
Revisions:

Date:
 August 2004

Drawn by:
 RD

Scale:
 1:5





SIP Building Systems Limited
 Unit 2, Expressway Industrial Estate, Turnhall Road, Ditton,
 Widnes, Cheshire, WA8 8RD.
 Tel: 0870 224 8040 Fax: 0870 224 8041
 Email: sales@sipbuildingsystems.co.uk

Drawing Title:
**SBS-SIP Electricity
 meter box detail**

Revisions:

Date:
 August 2004

Drawn by:
 RD

Scale:
 1:5



102mm brickwork
outer leaf

Flexible mastic seal
to meter box

Approved breather membrane

Max 1000mm
Min 500mm

Gas inlet pipe

50mm cavity

Lap breather membrane
from above over cavity tray

Cavity tray to extend 150mm
beyond the meter box in both
directions with cavity
weepholes both sides

Minimum 15mm ventilation
gap between meter and
breather membrane

Floor finish to
client specification

DPC

DPC



SIP Building Systems Limited
Unit 2, Expressway Industrial Estate, Turnhall Road, Ditton,
Widnes, Cheshire, WA8 8RD.
Tel: 0870 224 8040 Fax: 0870 224 8041
Email: sales@sipbuildingsystems.co.uk

Drawing Title:

SBS-SIP
Gas meter box detail

Revisions:

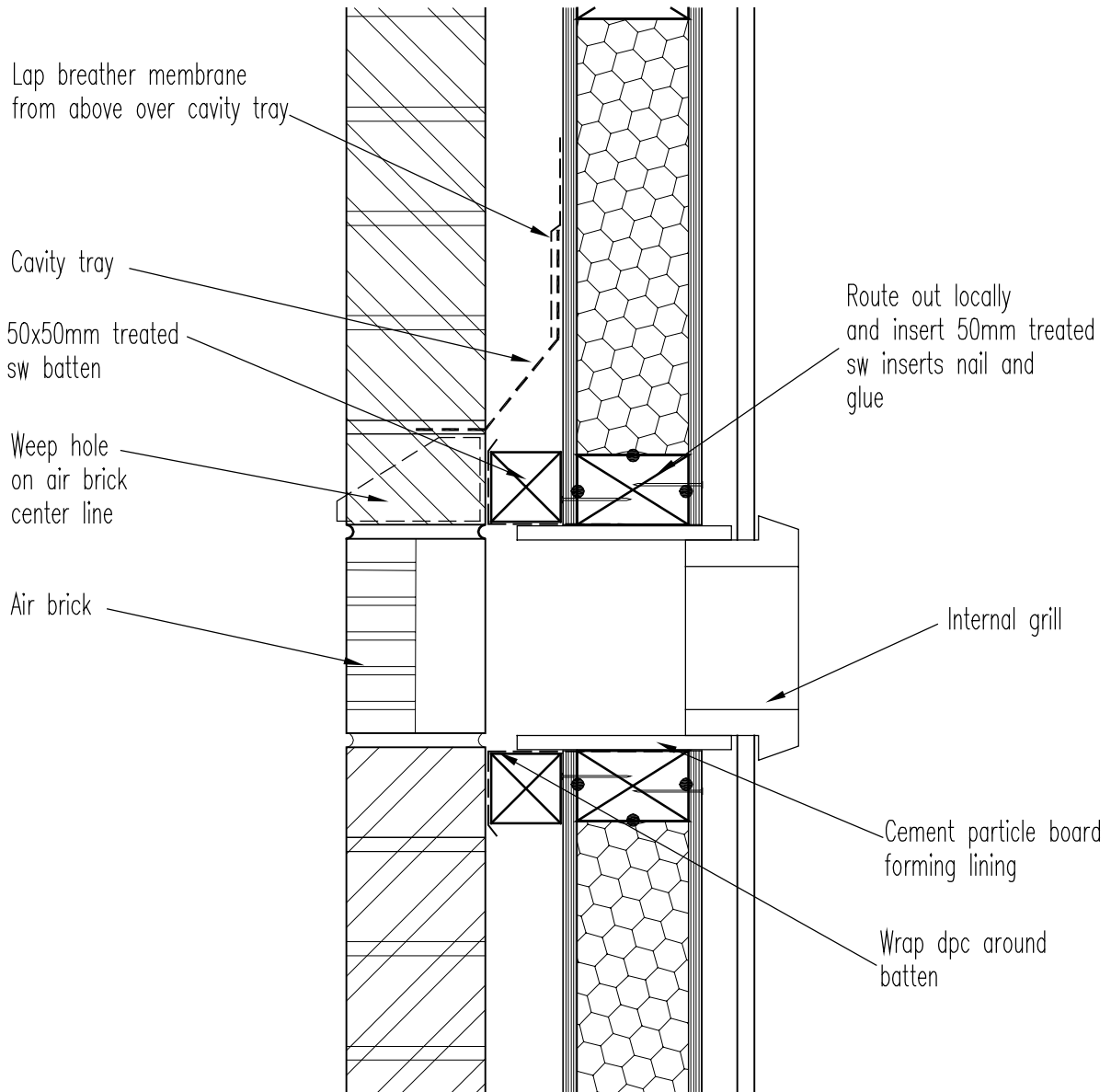
Date:

August 2004

Drawn by:
RD

Scale:
1:10





SIP Building Systems Limited
 Unit 2, Expressway Industrial Estate, Turnhall Road, Ditton,
 Widnes, Cheshire, WA8 8RD.
 Tel: 0870 224 8040 Fax: 0870 224 8041
 Email: sales@sipbuildingsystems.co.uk

Drawing Title:
 SBS-SIP
 Air brick detail

Revisions:

Date:
 August 2004

Drawn by:
 RD

Scale:
 1:5



See BRE guidance
on render designation

Stainless steel
lath fixed to inert
backing board such
as cement particle board
Render specification as
follows:

First coat 3-6mm of
designation I render
Second coat 10-14mm
designation II
Final coat
Designation II

15x25mm treated
softwood battens
fixed vertically and
drained at bottom

Approved breather
membrane
Secure bottom plate using
3.75x75mm galvanised
ringshank nails @
150mm c/c

Continuous SBS
urethane sealant/
adhesive to be
applied by the contractor

Simpson Strong Tie
SPA 38 or similar
approved sole
plate anchor

3 coat sand cement
render

Stainless steel render
stop bead

Insect guard

Blockwork substructure

SBS wall panel
12.5mm foil backed
plaster board

Secure panel using
2.8x63mm galvanised
ringshank nails
@150mm c/c

50mm treated sw
bottom plate with
chamfered top edges

40mm treated sw
sole plate

Floor finish to
client specification

Concrete floor slab to
structural engineers design
to include steel mesh in the
bottom of the slab

CFC/HCFC-Free rigid
urethane insulation

20mm continuous
urethane insulation

DPM



SIP Building Systems Limited
Unit 2, Expressway Industrial Estate, Turnhall Road, Ditton,
Widnes, Cheshire, WA8 8RD.
Tel: 0870 224 8040 Fax: 0870 224 8041
Email: sales@sipbuildingsystems.co.uk

Drawing Title:

SBS-SIP
Sand cement render

Revisions:

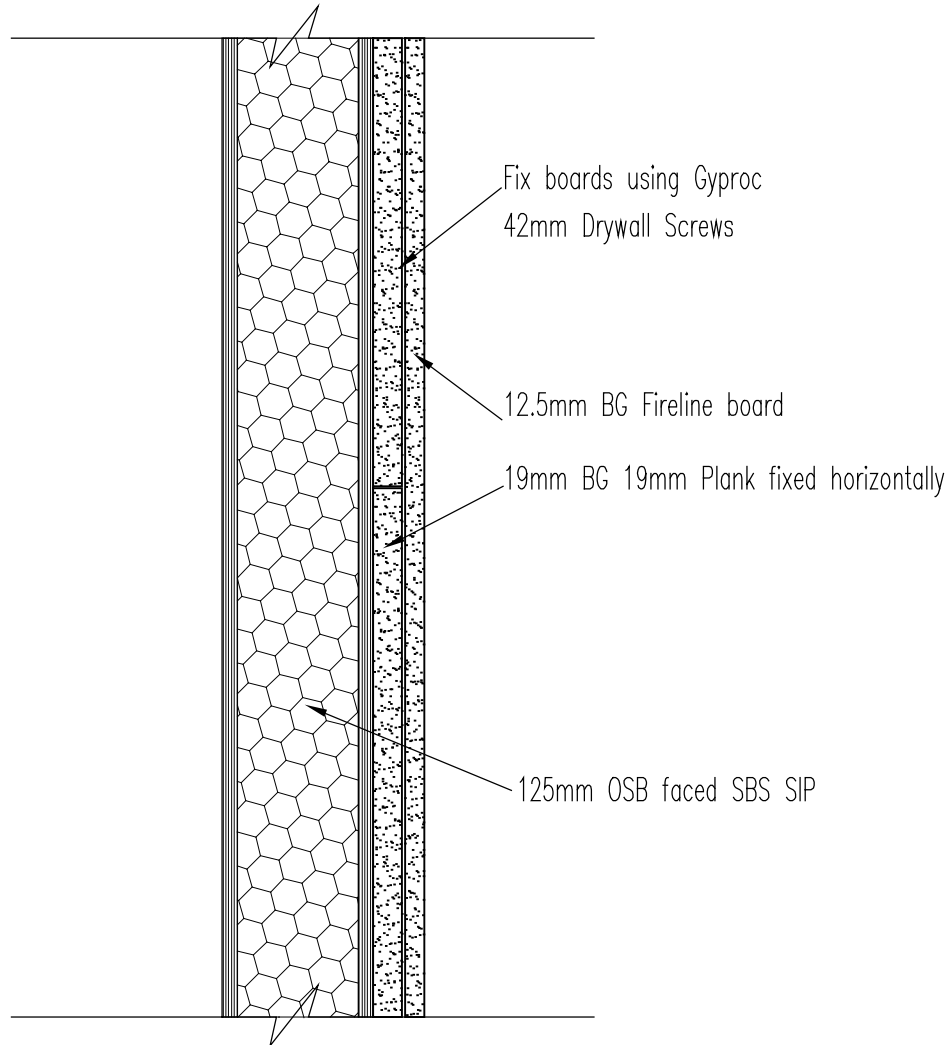
Date:

Nov 2004

Drawn by:
RD

Scale:
1:5





60 minute fire rated partition
 The Building Test Centre
 Report number: BTC 13687F



SIP Building Systems Limited
 Unit 2, Expressway Industrial Estate, Turnhall Road, Ditton,
 Widnes, Cheshire, WA8 8RD.
 Tel: 0870 224 8040 Fax: 0870 224 8041
 Email: sales@sipbuildingsystems.co.uk

Drawing Title:
 SBS-SIP
 Sand cement render

Revisions:

Date:
 June 2005

Drawn by:
 RD

Scale:
 1:5

